

149°25'0"E 149°30'0"E 149°35'0"E 149°40'0"E 149°45'0"E 149°50'0"E 149°55'0"E 150°0'0"E 150°5'0"E

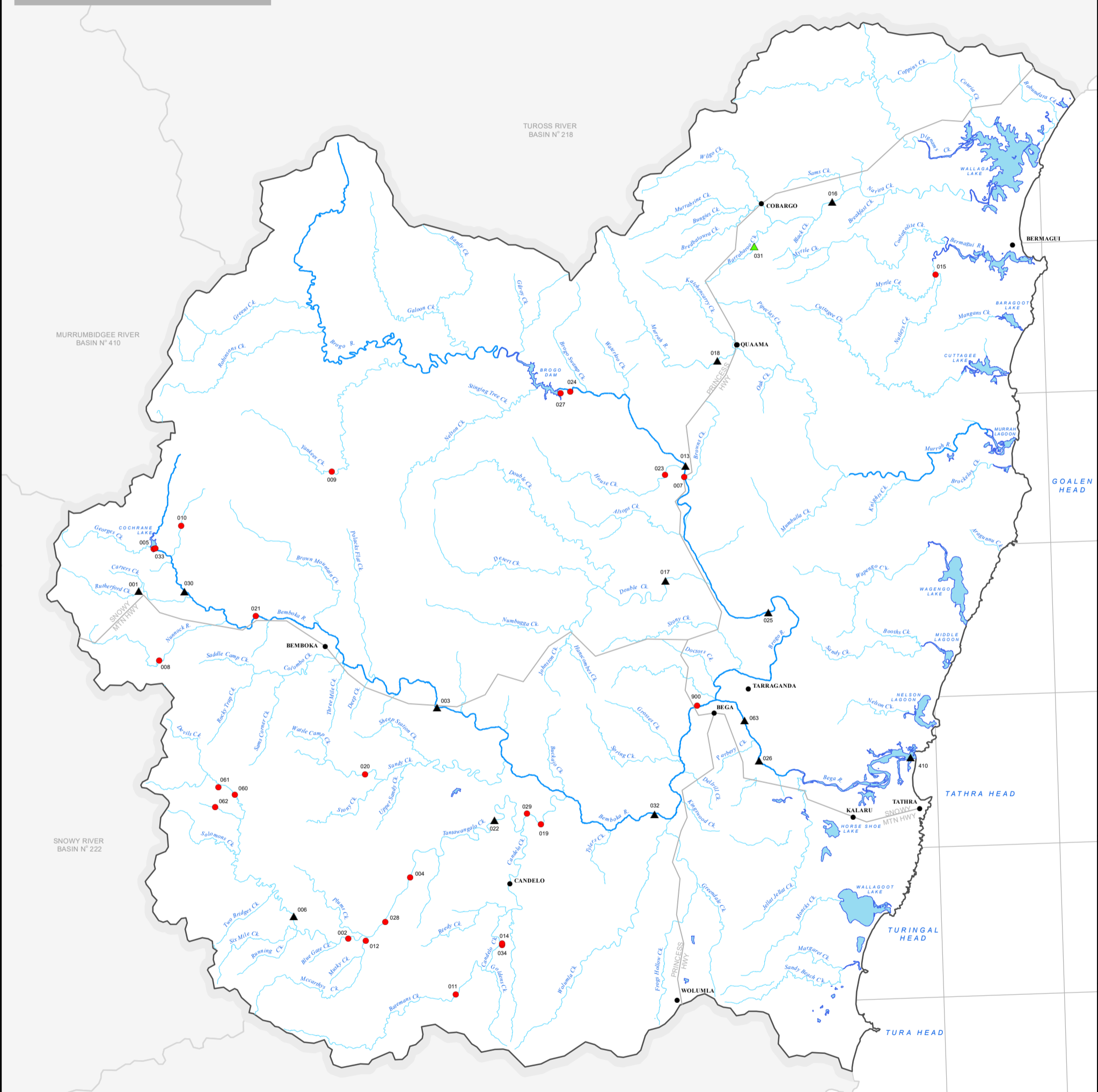


BEGA RIVER BASIN
BASIN N° 219
GAUGING STATIONS

March 2011

36°10'0"S
36°15'0"S
36°20'0"S
36°25'0"S
36°30'0"S
36°35'0"S
36°40'0"S
36°45'0"S
36°50'0"S
36°55'0"S
219 BEGA RIVER BASIN

36°10'0"S
36°15'0"S
36°20'0"S
36°25'0"S
36°30'0"S
36°35'0"S
36°40'0"S
36°45'0"S
36°50'0"S
36°55'0"S
37°0'0"S

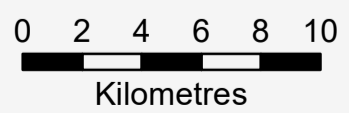
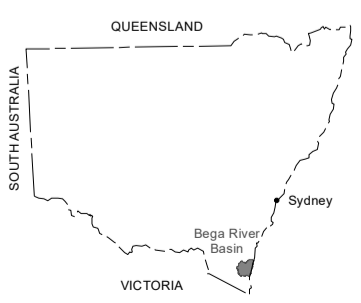


Legend

- Town
- Highway
- ~ River / Stream
- Dam / Lake

Gauging Station

- ▲ Current with significant data
- ▲ Current without significant data
- Discontinued or Moved



149°20'0"E 149°25'0"E 149°30'0"E 149°35'0"E 149°40'0"E 149°45'0"E 149°50'0"E 149°55'0"E

Site ID	Sitename	Cat	Latitude	Longitude
219001	Rutherford Creek at Brown Mountain	A	-36° 35' 38"	149° 26' 34"
219002	Tantawangalo Creek at Sunnyside	C	-36° 47' 38"	149° 34' 49"
219003	Bemboka River at Morans Crossing	A	-36° 39' 57"	149° 38' 53"
219004	Tantawangalo Creek at Tantawangalo School	C	-36° 45' 38"	149° 37' 30"
219005	Georges Creek at Steeple Flat (Cochrane Dam)	C	-36° 34' 13"	149° 27' 16"
219006	Tantawangalo Creek at Tantawangalo Mountain (Dam)	A	-36° 46' 49"	149° 32' 34"
219007	Brogo River at Brogo	C	-36° 32' 26"	149° 49' 35"
219008	Nunnock River at Brown Mountain (Dam Site)	C	-36° 38' 00"	149° 27' 18"
219009	Yankeys Creek D/S Bega Swamps	C	-36° 31' 50"	149° 34' 49"
219010	Bonar Creek at Brown Mountain (U/S Diversion Weir)	C	-36° 33' 29"	149° 28' 26"
219011	Candelo Creek at Heffernans (Near Yurammie)	C	-36° 49' 39"	149° 39' 15"
219012	Devils Creek Near Tantawangalo(Main Road Bridge)	C	-36° 47' 43"	149° 35' 33"
219013	Brogo River at North Brogo	A	-36° 32' 03"	149° 49' 38"
219014	Candelo Creek at Yurammie No. 3	C	-36° 47' 59"	149° 41' 16"
219015	Nutleys Creek Near Bermagui	C	-36° 25' 51"	150° 00' 22"
219016	Narira River at Cobargo	A	-36° 23' 17"	149° 56' 08"
219017	Double Creek Near Brogo	A	-36° 35' 55"	149° 48' 38"
219018	Murrah River at Quaama	A	-36° 28' 33"	149° 51' 07"
219019	Tantawangalo Creek at Kameruka	C	-36° 43' 59"	149° 43' 05"
219020	Sandy Creek at Mogilla	C	-36° 42' 06"	149° 35' 46"
219021	Bemboka River at Bemboka	C	-36° 36' 37"	149° 31' 25"
219022	Tantawangalo Creek at Candelo Dam Site	A	-36° 43' 49"	149° 41' 08"
219023	House Creek at Brogo North	C	-36° 32' 20"	149° 48' 46"
219024	Brogo River D/S Brogo Dam	C	-36° 29' 24"	149° 44' 55"
219025	Brogo River at Angledale	A	-36° 37' 07"	149° 52' 54"
219026	Bega River at Warraguburra	A	-36° 42' 06"	149° 52' 19"
219027	Brogo River at Brogo Dam (Storage)	C	-36° 29' 28"	149° 44' 31"
219028	Tantawangalo Creek at Tantawangalo	C	-36° 47' 07"	149° 36' 25"
219029	Tantawangalo Creek at Kameruka No. 2	C	-36° 43' 38"	149° 42' 30"
219030	Bemboka River at Brown Mountain Power Station	A	-36° 35' 43"	149° 28' 29"
219031	Barrabaroo Creek at Goanna Road	B	-36° 24' 44"	149° 52' 48"
219032	Bega River at Kanoona	A	-36° 43' 48"	149° 47' 51"
219033	Georges Creek at Cochrane Dam (Storage)	C	-36° 34' 13"	149° 27' 19"
219034	Candelo Creek at Greenmount Road (Yurammie No. 4)	C	-36° 48' 02"	149° 41' 17"
219060	Ceb Creek at Glenbog State Forest	C	-36° 42' 37"	149° 30' 17"
219061	Wicksend Creek at Glenbog State Forest	C	-36° 42' 22"	149° 29' 36"
219062	Willbob Creek at Glenbog State Forest	C	-36° 43' 01"	149° 29' 26"
219063	Bega River - Darceys	A	-36° 40' 43"	149° 51' 46"
219410	Bega River at Bega	A	-36° 42' 09"	149° 58' 41"
219900	Bega River at Bega (North Bye)	C	-36° 40' 10"	149° 49' 48"