

THE BASIN PLAN

Namoi Alluvium Water Resource Plan Consultation Report

Schedule C

Published by NSW Department of Industry

Namoi Alluvium Water Resource Plan Consultation Report

First published June 2019

ISBN/ISSN number – contact library.services@industry.nsw.gov.au for information on how to obtain a number

More information

NSW Department of Industry Water

industry.nsw.gov.au

Acknowledgments

NSW Office of Environment and Heritage

© State of New South Wales through Department of Industry [2018]. You may copy, distribute, display, download and otherwise freely deal with this publication for any purpose, provided that you attribute the Department of Industry as the owner. However, you must obtain permission if you wish to charge others for access to the publication (other than at cost); include the publication in advertising or a product for sale; modify the publication; or republish the publication on a website. You may freely link to the publication on a departmental website.

Disclaimer: The information contained in this publication is based on knowledge and understanding at the time of writing (April, 2018) and may not be accurate, current or complete. The State of New South Wales (including the NSW Department of Industry), the author and the publisher take no responsibility, and will accept no liability, for the accuracy, currency, reliability or correctness of any information included in the document (including material provided by third parties). Readers should make their own inquiries and rely on their own advice when making decisions related to material contained in this publication.

Aboriginal acknowledgement

The New South Wales Government proudly acknowledges the Aboriginal community of NSW and their rich and diverse culture and pay respect to their Elders past, present and future.

The NSW acknowledges Aboriginal people as Australia's First Peoples practicing the oldest living culture on earth and as the Traditional Owners and Custodians of the lands and waters.

We acknowledge that the people of the Gomeroi Nation hold a significant connection to the lands in which the Namoi Alluvium falls upon.

The Namoi Alluvium holds great areas of spiritual, cultural and economic importance to the first nation people and NSW recognises the connection of the water to the people of these nations to the water.

We recognise the intrinsic connection of Traditional Owners to country and acknowledge their contribution to the management of the Namoi Alluvium landscape and natural resources.

NSW Department of Industry understands the need for consultation and inclusion of Traditional Owner knowledge, values and uses in water quality planning to ensure we are working towards equality in objectives and outcomes.

NSW Department of Industry is committed to continue future relationships and building strong partnerships with our First Nation People.

We thank the Elders, representatives of the Gomeroi Nation and the Aboriginal community who provided their knowledge throughout the planning process.

Contents

Aboriginal acknowledgement	i
1 Introduction	3
1.1 The role of the consultation report	3
1.2 The Basin Plan 2012 (Water Act 2007)	3
1.3 Namoi Alluvium WRP Area	4
2 Consultation	0
2.1 Broad public consultation	0
2.1.1 Status and issues phase	0
2.1.2 Public exhibition phase	0
2.2 Targeted Consultation	1
2.2.1 Groundwater SAP	1
2.2.2 Namoi Water	3
2.2.3 All SAP	3
2.3 First Nation Consultation	3
2.3.1 Face to Face Interviews	4
2.3.2 Workshops	4
2.3.3 Consultation Outcomes	4
Appendix A – Namoi WRPA First Nations Consultations	6

Figures

Figure 1. GW14 Namoi Alluvium Water Resource Plan Area	4
--	---

Tables

Table 1: Groundwater WRP SAP Meetings	1
---	---

1 Introduction

1.1 The role of the consultation report

Consultation with stakeholders and the community is at the forefront of the development of New South Wales (NSW) Water Resource Plans (WRPs). Consultation has been undertaken for each of the 20 surface water and groundwater WRPs being developed by NSW. The purpose of this report is to describe the consultation that was undertaken as part of the development of the WRPs. Specifically, this report will detail the public consultation, both broad and targeted that took place within the Namoi Alluvium WRP area in order to further the development of the Namoi Alluvium WRP and inform changes to the Namoi Alluvial Water Sharing Plan (WSP).

1.2 The Basin Plan 2012 (Water Act 2007)

The Basin Plan provides a coordinated approach to managing Basin water resources across Queensland, NSW, ACT, Victoria and South Australia. In NSW the plan came into effect following the signing of Inter-governmental and National Partnership Agreements in 2014. As lead agency, Department of Industry Water (NSW Department of Industry) are working together with agencies including Office of Environment and Heritage (OEH) to implement the plan. It requires NSW to develop WRPs for each area within the Murray-Darling Basin. The development of each WRP is guided by the requirements set out in Chapter 10 of the Basin Plan. Consultation and the views of local communities are an integral part of the preparation and development of WRPs and the following requirements of the Basin Plan are assessed in relation to consultation.

10.07 Consultation to be demonstrated

(1) A water resource plan prepared by a Basin State must contain a description of the consultation in relation to the plan (including in relation to any part of the plan), if any, that was undertaken before the State gave the plan to the Authority under subsection 63(1) of the Act.

10.26 Planning for environmental watering

(1) A water resource plan must provide for environmental watering to occur...
(2) For the purposes of subsection (1), the water resource plan must be prepared having regard to:
(b) the views of local communities, including bodies established by a Basin State that express community views in relation to environmental watering.

10.53 Consultation and preparation of water resource plan

(1) A water resource plan must be prepared having regard to the views of relevant Indigenous organisations with respect to the matters identified under section 10.52...

1.3 Namoi Alluvium WRP Area

The Namoi Alluvium Water Resource Plan covers groundwater within the main alluvial deposits associated with the Namoi River from approximately 20 km downstream of Copeton Dam, continuing north-west through Bingara to Biniguy through to approximately 45 km west of Moree.

The Namoi Water Resource Plan includes five SDL resource units, the Lower Namoi Alluvium, the Upper Namoi Alluvium, Manilla Alluvium, Peel Valley Alluvium and the Upper Namoi Tributary Alluvium. The boundaries of these SDL resource units reflect those of the corresponding groundwater sources managed under NSW water sharing plans.

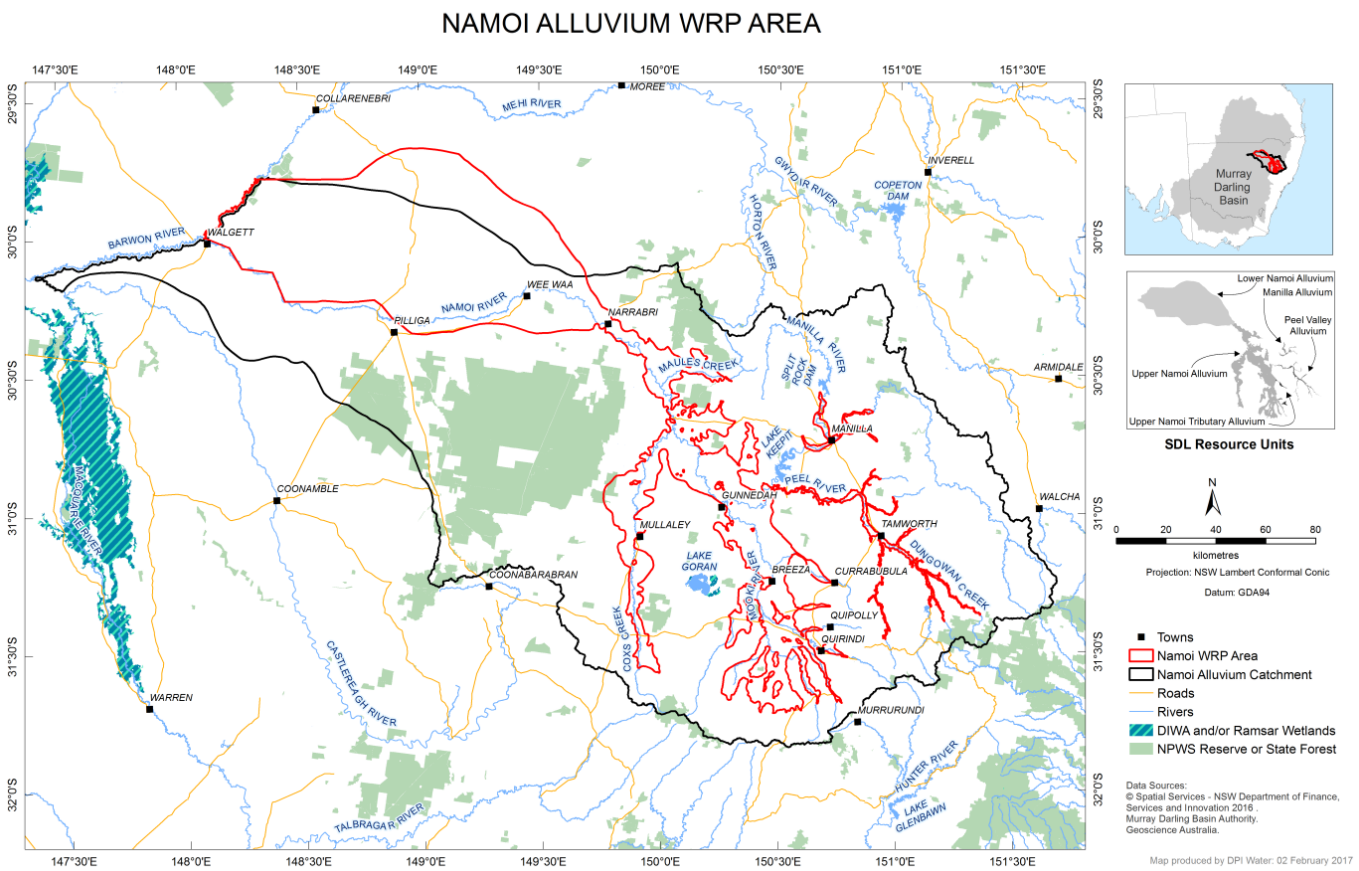


Figure 1. GW14 Namoi Alluvium Water Resource Plan Area

2 Consultation

2.1 Broad public consultation

Stakeholder consultation is an essential part of the development of NSW WRPs and was undertaken throughout the development of the Namoi Alluvium WRP. The general public and stakeholders had opportunity to provide comment during the early phase of WRP development through the Status and Issues phase (Section 2.1.1) and then again in the later stages of WRP development during the public exhibition phase (Section 2.1.2).

2.1.1 Status and issues phase

The Namoi Alluvium WRP Status and Issues Paper (NSW Department of Industry) was released for public comment on 17 March 2017. This can be viewed at https://www.industry.nsw.gov.au/_data/assets/pdf_file/0004/157360/Namoi-GW-WRP-SIP.pdf

Eighteen public submissions on this paper were received and within these submissions 85 issues were raised. Issues raised in submissions were logged on the Submissions Database System. This system was developed specifically for capturing comments made to NSW Department of Industry during targeted consultation, as formal written submissions following public exhibition, and by the stakeholder advisory or other panels.

An Issues Assessment Report was prepared by NSW Department of Industry for internal and inter-agency analysis, as well as for consideration of the Groundwater Stakeholder Advisory Panel. The Issues Assessment Report informed decisions for option prioritisation leading into the Strategy and Rule Development Phase of WRP development.

2.1.2 Public exhibition phase

The Water Sharing Plan for the Namoi Alluvial Groundwater Sources 2019 and draft Namoi Alluvium WRP were released for public comment on the 11th June 2019. They can be viewed at <https://www.industry.nsw.gov.au/water/plans-programs/water-resource-plans/drafts>.

During this phase NSW Department of Industry communicated with stakeholders in a number of ways.

- Stakeholder specific consultations
- Public information sessions (early evening sessions)
- NSW Department of Industry website
- Submission email address
- Telephone number for inquiries
- Have Your Say website
- One-on-One consultations (where appropriate)
- Emails to stakeholders
- Local media – media releases
- Social media – tile advertising
- Local press advertising

NSW Department of Industry accepted submissions on the draft WRP and amended WSP. Supporting documents were made available to provide context and background information.

Public submissions received on the draft WRP and amended WSP were prioritised and any new issues progressed for further consultation with the Groundwater SAP.

2.2 Targeted Consultation

Targeted consultation was undertaken for groundwater WRPs through a Groundwater Stakeholder Advisory Panel (SAP). The SAP consisted of representatives of key stakeholders and government agencies. Their role was to provide a forum where draft elements of the WRP could be reviewed, and the various interests and views put forward and discussed to promote common understanding. The SAP was the focal point for targeted consultation for this plan.

Further targeted consultation is proposed during the public exhibition period on some specific rules with the water sharing plan with key stakeholders.

2.2.1 NSW Groundwater SAP

The Groundwater SAP, established in August 2017 takes its membership from the following stakeholder groups or interests:

- NSW Department of Industry
- Office of Environment and Heritage (OEH)
- Murray Darling Basin Authority
- Seven regional representatives of the NSW Irrigators Council
- NSW Nature Conservation Council
- Murray Lower Darling Rivers Indigenous Nations (MLDRIN)
- Northern Basin Aboriginal Nations (NBAN)
- Inland Rivers Network
- NSW Minerals Council
- Local Government NSW

The SAP Terms of Reference can be viewed here <https://www.water.nsw.gov.au/water-management/water-resource-plans/Groundwater-SAP-terms-of-reference.pdf>. Broadly, they are an advisory panel that have been charged with helping to identify issues, examine options, and provide NSW Department of Industry with feedback and advice throughout the development of WRPs.

The number of SAP meetings held as part of the Groundwater WRP development and the issues that were discussed at these meetings can be seen in Table 1.

Table 1: Groundwater WRP SAP Meetings

SAP Meeting (Number & Description)	Location	Date
SAP Meeting 1: - <ul style="list-style-type: none">• Introduction to the SAP and the Terms of Reference• WRP Process – Road Map• Status and Issues• Resource Descriptions• WRP Evaluation Report• Risk Assessment	Sydney, NSW	08 September 2017

<ul style="list-style-type: none"> The Way Forward 		
SAP Meeting 2:- <ul style="list-style-type: none"> Resource Descriptions and Risk Assessment - update Sustainable Diversions Limits and Long Term Average Annual Extraction Limits Entitlements Groundwater Dependent Ecosystems Issues assessments Consultation strategy 	Sydney, NSW	31 October 2017
SAP Meeting 3:- <ul style="list-style-type: none"> Water Renewal Task Force Modelling IR Guideline Indigenous Consultation Compliance with LTAAEL Permitted Take (MDBA) <ul style="list-style-type: none"> SDL Compliance Groundwater Amendments Disallowance Permitted Take Issues Assessment Report Risk Assessment Feedback Report 	Sydney, NSW	14 March 2018
SAP Meeting 4:- <ul style="list-style-type: none"> GW WRP development...The road ahead SDL/LTAAEL Amended Policy Proposal Annual Permitted Take/SDL Compliance Recharge/Specification Environmental Water GDE Policy Proposal WSP Policy Proposals; <ol style="list-style-type: none"> Local Impacts Management, Distance Rules, Account Management Rules, Trade, Contamination Sources Connectivity WSP/Split Merge Process 	Sydney, NSW	17 May 2018
SAP Meeting 5:- <ul style="list-style-type: none"> Lachlan Alluvium Water Resource Plan Lachlan Alluvium Water Sharing Plan Lachlan Alluvium Water Quality Management Plan NSW Groundwater Environmental Monitoring, Evaluation and Reporting Plan Account management Rules, Carryover and Available Water Determinations Aboriginal Engagement / Cultural Water for the Ngemba Billabong 	Sydney, NSW	15 th August 2018
SAP Meeting 6:-	Sydney, NSW	25 th January

<ul style="list-style-type: none"> • Feedback from public exhibition process to date • Summary of subsequent proposed changes to Lachlan Alluvium Water Resource Plan and Lachlan Alluvium Water Sharing Plan • MDBA assessment feedback process and timeframe • Progress on the Macquarie –Castlereagh, Murrumbidgee and Gwydir Alluvium WRP – outcomes of public exhibition • Update on progress on the remaining draft Groundwater Water Resource Plans 		2019
---	--	------

2.2.2 Namoi Water

Namoi Water requested more detailed explanation on a number of issues presented at the Groundwater SAP. This information was presented to Namoi Water on the 31 July 2018 in Gunnedah. The Department of Industry presented the groundwater model for the Upper Namoi.

Further targeted consultation was held with Namoi Water and Peel Valley Water Users will be undertaken to discuss zone specific issues.

2.2.3 All SAP

NSW Department of Industry convened two All SAP workshops during the course of WRP development. Both workshops were held in Sydney, the first on 11 – 12 December 2017 and the second on 5 – 6 June 2018. Attendees included representatives from all WRP SAP committees and key NSW government agencies including the MDBA and CEWO. The first All SAP workshop covered three main topics:

1. NSW Government's response to recent reviews and how the NSW Department of Industry will approach its responsibilities within the Murray-Darling Basin
2. Key NSW policy issues requiring resolution in order to progress WRP development
3. How SAPs and agencies can work together to deliver the water resource plans over the next 12–18 months.

The second All SAP workshop covered seven main topics:

1. State-wide planning assumptions
2. The WRP including the LTWP, Risk Assessment and Water Quality Management Plan
3. MDBA compliance framework
4. Water Renewal Taskforce update
5. First Nation engagement and cultural water
6. Northern Basin Floodplain Harvesting and Northern watering event and Southern Basin SDL Adjustment Mechanism and Pre-requisite Policy Measures
7. Groundwater policy update

2.3 First Nation Consultation

The Namoi Alluvium WRP area is located within the traditional lands of, and is significant to, the Gomeroi Nation and traditional owners. NSW Department of Industry has spent time engaging and consulting traditional owners of the Gomeroi people to identify and record objectives and outcomes in regard to Aboriginal spiritual and cultural values and uses within the Namoi Alluvium WRP area.

Consultation with traditional owners was undertaken using a nation-based model. NSW Department of Industry facilitated the gathering of cultural information from traditional owners. The report including the development of cultural objectives, values and uses is attached in Attachment A.

2.3.1 Face to Face Interviews

A series of face-to-face interviews were undertaken with Senior Traditional Owners (TOs) from the Gomeroi Nation in March 2018. Senior TOs who participated in the face-to-face interviews were drawn from three separate categories – grassroots, Native Title applicants and suggestions from other interview participants. In total, these Senior Traditional Owners represented 8 different family groups, represented over 12 320 different people and spoke for a broad range of communities and different areas of Gomeroi Country. These interviews assisted in formulating the discussion undertaken in the workshops held in April 2018.

2.3.2 Workshops

Following on from the face-to-face interviews First Nation consultation workshops were held in Tamworth, Walgett, Moree and Tingha in April 2018 with the Gomeroi Nation.

A total of 31 participants, including 30 Gomeroi Traditional Owners, attended workshops.

Common themes were used to guide discussion in the workshops. These were established during the face-to-face interviews and included:

- Water is life
- Healthy Country and people
- Cultural continuity and revival
- Custodianship and jurisdiction
- Compensation and redress
- Management and control
- Communication and partnerships

2.3.3 Consultation Outcomes

The report on the outcome of the consultation with the Gomeroi Nation is included at Attachment A of this Consultation report.

These reports demonstrate that:

- The WRP was developed in a way that had genuine regard to objectives and outcomes in respect of social, spiritual and cultural values and uses of the water resources by Traditional Owners.
- Consultation with relevant Indigenous organisations was undertaken.

In addition to consulting with Traditional Owners, NSW consulted with several organisations (e.g. native title, LALCS) Murdi Paaki working group, MLDRIN and NBAN. This demonstrates that:

- The consultation had regard to the views of relevant Indigenous organisations with respect to inclusion of Indigenous representation in the preparation and implementation of the plan.
 - The consultation had regard to the views of relevant Indigenous organisations with respect to Indigenous social, cultural, spiritual and customary objectives, and strategies for achieving these objectives.
 - The consultation had regard to the views of relevant Indigenous organisations with respect to encouragement of active and informed participation of Indigenous people.
-

-
- The consultation had regard to the views of relevant Indigenous organisations with respect to risks to Indigenous values and Indigenous uses arising from the use and management of the water resources of the water resource plan area.
 - The consultation has regard to the views of Indigenous people with respect to cultural associations with the groundwater resources of this WRPA.

DRAFT

Attachment A – Gomeroi First Nations Consultation

DRAFT