

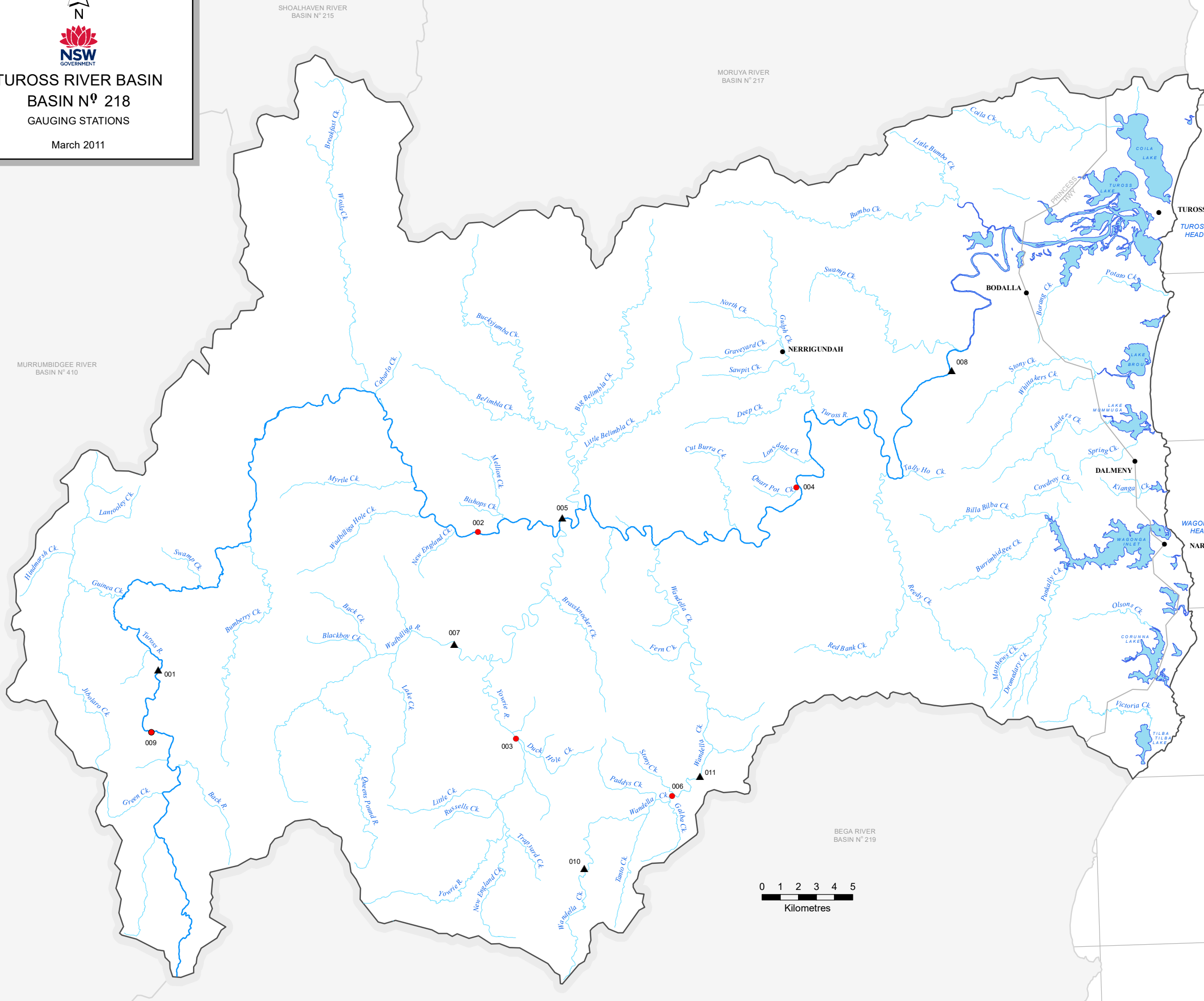
149°25'0"E 149°30'0"E 149°35'0"E 149°40'0"E 149°45'0"E 149°50'0"E 149°55'0"E 150°0'0"E 150°5'0"E 150°10'0"E 150°15'0"E

36°55'0"S 36°50'0"S 36°45'0"S 36°40'0"S 36°35'0"S 36°30'0"S 36°25'0"S

218 TUROSS RIVER BASIN

NSW GOVERNMENT

**TUROSS RIVER BASIN**  
**BASIN N° 218**  
**GAGING STATIONS**  
 March 2011



**Legend**

- Town
- Highway
- ~ River / Stream
- ☪ Dam / Lake

**Gauging Station**

- ▲ Current with significant data
- ▲ Current without significant data
- Discontinued or Moved

CARTOGRAPHY BY: J.C. PETROVIC March 2011

149°25'0"E 149°30'0"E 149°35'0"E 149°40'0"E 149°45'0"E 149°50'0"E 149°55'0"E 150°0'0"E 150°5'0"E 150°10'0"E 150°15'0"E

218 TUROSS RIVER BASIN

Site ID	Sitename	Cat	Latitude	Longitude
218001	Tuross River at Tuross Vale	A	-36° 15' 53"	149° 30' 37"
218002	Tuross River at Belowra	C	-36° 12' 06"	149° 42' 35"
218003	Yowrie River at Yowrie	C	-36° 18' 17"	149° 43' 43"
218004	Tuross River at Wattlegrove	C	-36° 11' 04"	149° 54' 21"
218005	Tuross River D/S Wadbilliga River Junction	A	-36° 11' 45"	149° 45' 42"
218006	Wandella Creek at Wandella	C	-36° 20' 10"	149° 49' 24"
218007	Wadbilliga River at Wadbilliga	A	-36° 15' 25"	149° 41' 33"
218008	Tuross River at Eurobodalla	A	-36° 07' 44"	150° 00' 11"
218009	Tuross River at Tuross	C	-36° 17' 55"	149° 30' 04"
218010	Wandella Creek at U/S Illawambra Dam	A	-36° 22' 14"	149° 46' 04"
218011	Wandella Creek at Motbey Ferguson Road	A	-36° 19' 36"	149° 50' 27"