

BASIN PLAN 2012

NSW Murray–Darling Basin Fractured Rock Water Resource Plan Consultation Report

Schedule C

Published by Department of Planning, Industry and Environment

NSW Murray–Darling Basin Fractured Rock Water Resource Plan Consultation Report

First published July 2019.

INT17/230177

NOTE: On 1 July 2019, NSW Department of Industry became part of NSW Department of Planning, Industry and Environment. Any references to Department of Industry in this document, except where made in a historical context, can be taken to refer to Department of Planning, Industry and Environment.

More information

Department of Planning, Industry and Environment—Water

www.industry.nsw.gov.au/water

Acknowledgments

NSW Office of Environment and Heritage

© State of New South Wales through Department of Planning, Industry and Environment 2019. You may copy, distribute, display, download and otherwise freely deal with this publication for any purpose, provided that you attribute the Department of Planning, Industry and Environment as the owner. However, you must obtain permission if you wish to charge others for access to the publication (other than at cost); include the publication in advertising or a product for sale; modify the publication; or republish the publication on a website. You may freely link to the publication on a departmental website.

Disclaimer: The information contained in this publication is based on knowledge and understanding at the time of writing (July 2019) and may not be accurate, current or complete. The State of New South Wales (including the Department of Planning, Industry and Environment), the author and the publisher take no responsibility, and will accept no liability, for the accuracy, currency, reliability or correctness of any information included in the document (including material provided by third parties). Readers should make their own inquiries and rely on their own advice when making decisions related to material contained in this publication.

Acknowledgement of Traditional Owners

The New South Wales Government proudly acknowledges the Aboriginal community of NSW and their rich and diverse culture and pay respect to their Elders past, present and future.

The NSW acknowledges Aboriginal people as Australia’s First Peoples and the Traditional Owners and Custodians of the lands and waters, practicing the oldest living culture on earth.

We acknowledge that the people of the Barkindji, Barapa Barapa, Bigambul, Budjiti, Euahlayi, Githabul, Gomeroi, Guwamu, Kambuwal, Kunja, Kwiambul, Maljangapa, Maraura, Murrawarri, Muthi Muthi, Nari Nari, Ngarabal, Ngemba, Ngiyampaa, Ngunnawal, Nyeri Nyeri, Tati Tati, Wadi Wadi, Wailwan, Weki Weki, Wemba Wemba, Wiradjuri, Yita Yita and Yorta Yorta Nations hold significant connection to the lands which rest upon the NSW Murray-Darling Basin Porous Rock.

The NSW Murray-Darling Basin Fractured Rock WRP holds areas of great spiritual, cultural and economic importance to the first nation people and NSW recognises the connection of the water to the people of these nations to the water.

We recognise the intrinsic connection of Traditional Owners to country and acknowledge their contribution to the management of the NSW Murray-Darling Basin Fractured Rock WRP area’s landscapes and natural resources.

The Department of Planning, Industry and Environment understands the need for consultation and inclusion of Traditional Owner knowledge, values and uses in water quality planning to ensure we are working towards equality in objectives and outcomes.

The Department of Planning, Industry and Environment is committed to continue future relationships and building strong partnerships with our First Nation People.

We thank the Elders, representatives of the Barkindji, Barapa Barapa, Bigambul, Budjiti, Euahlayi, Githabul, Gomeroi, Guwamu, Kambuwal, Kunja, Kwiambul, Maljangapa, Maraura, Murrawarri, Muthi Muthi, Nari Nari, Ngarabal, Ngemba, Ngiyampaa, Ngunnawal, Nyeri Nyeri, Tati Tati, Wadi Wadi, Wailwan, Weki Weki, Wemba Wemba, Wiradjuri, Yita Yita and Yorta Yorta Nations and the Aboriginal community who provided their knowledge throughout the planning process.

Contents

| | |
|---|----|
| Acknowledgement of Traditional Owners | i |
| 1 Introduction | 1 |
| 1.1 The role of the consultation report..... | 1 |
| 1.2 The Basin Plan 2012 (Water Act 2007- Commonwealth)..... | 1 |
| 1.3 NSW Murray-Darling Basin Fractured Rock WRP Area | 2 |
| 2 Consultation..... | 4 |
| 2.1 Broad public consultation | 4 |
| 2.1.1 Status and issues phase..... | 4 |
| 2.1.2 Public exhibition phase | 4 |
| 2.2 Targeted Consultation | 5 |
| 2.2.1 NSW Groundwater SAP..... | 5 |
| 2.2.2 Workshops for all stakeholder advisory panels..... | 7 |
| 2.3 First Nation Consultation | 7 |
| 2.3.1 Face to Face Interviews | 7 |
| 2.3.2 Workshops | 8 |
| 2.3.3 Consultation Outcomes | 9 |
| Attachment A – Barkindji First Nations Consultation | 12 |
| Attachment B – Barapa Barapa First Nations Consultation | 14 |
| Attachment C – Bigambul First Nations Consultation | 15 |
| Attachment D – Budjiti First Nations Consultation | 16 |
| Attachment E – Euahlayi First Nations Consultation | 17 |
| Attachment F – Githabul First Nations Consultation | 18 |
| Attachment G – Gomeroi First Nations Consultation | 19 |
| Attachment H – Guwamu First Nations Consultation..... | 20 |
| Attachment I – Kambuwal First Nations Consultation | 21 |
| Attachment J – Kunja First Nations Consultation..... | 22 |
| Attachment K – Kwiambul First Nations Consultation..... | 23 |
| Attachment L – Maljangapa First Nations Consultation | 24 |
| Attachment M – Maraura First Nations Consultation | 25 |
| Attachment N – Murrawarri First Nations Consultation | 26 |
| Attachment O – Muthi Muthi First Nations Consultation | 27 |
| Attachment P – Nari Nari First Nations Consultation | 28 |
| Attachment Q – Ngarabal First Nations Consultation | 29 |
| Attachment R – Ngemba First Nations Consultation | 30 |
| Attachment S – Ngiyampaa First Nations Consultation | 31 |
| Attachment T – Ngunnawal First Nations Consultation | 32 |

| | |
|--|----|
| Attachment U – Nyeri Nyeri First Nations Consultation | 33 |
| Attachment V – Tati Tati First Nations Consultation | 34 |
| Attachment W – Wadi Wadi First Nations Consultation | 35 |
| Attachment X – Wailwan First Nations Consultation | 36 |
| Attachment Y – Weki Weki First Nations Consultation | 37 |
| Attachment Z – Wemba Wemba First Nations Consultation | 38 |
| Attachment AA – Wiradjuri First Nations Consultation | 39 |
| Attachment BB – Yita Yita First Nations Consultation | 40 |
| Attachment CC – Yorta Yorta First Nations Consultation | 41 |

Figures

| | |
|---|---|
| Figure 1. GW6 NSW Murray-Darling Basin Fractured Rock Rock Water Resource Plan Area | 3 |
|---|---|

Tables

| | |
|--|----|
| Table 1: Groundwater WRP SAP Meetings | 5 |
| Table 2: First Nations Consultation Outcomes | 10 |

1 Introduction

1.1 The role of the consultation report

Consultation with stakeholders and the community is at the forefront of the development of New South Wales (NSW) Water Resource Plans (WRPs). Consultation has been undertaken for each of the 20 surface water and groundwater WRPs being developed by NSW. The purpose of this report is to describe the consultation that was undertaken as part of the development of the WRPs. Specifically, this report will detail the public consultation, both broad and targeted that took place within the NSW Murray-Darling Basin Fractured Rock WRP area in order to further the development of the NSW Murray-Darling Basin Fractured Rock WRP and inform changes to the NSW Murray-Darling Basin Fractured Rock Water Sharing Plans (WSPs).

1.2 The Basin Plan 2012 (Water Act 2007- Commonwealth)

The Basin Plan provides a coordinated approach to managing Basin water resources across Queensland, NSW, ACT, Victoria and South Australia. In NSW the plan came into effect following the signing of Inter-governmental and National Partnership Agreements in 2014. As lead agency, Department of Planning, Industry and Environment is working with agencies including Office of Environment and Heritage (OEH) to implement the plan. It requires NSW to develop WRPs for each area within the Murray-Darling Basin. The development of each WRP is guided by the requirements set out in Chapter 10 of the Basin Plan. Consultation and the views of local communities are an integral part of the preparation and development of WRPs and the following requirements of the Basin Plan are assessed in relation to consultation.

10.07 Consultation to be demonstrated

(1) A water resource plan prepared by a Basin State must contain a description of the consultation in relation to the plan (including in relation to any part of the plan), if any, that was undertaken before the State gave the plan to the Authority under subsection 63(1) of the Act.

10.26 Planning for environmental watering

(1) A water resource plan must provide for environmental watering to occur...
(2) For the purposes of subsection (1), the water resource plan must be prepared having regard to:
(b) the views of local communities, including bodies established by a Basin State that express community views in relation to environmental watering.

10.53 Consultation and preparation of water resource plan

(1) A water resource plan must be prepared having regard to the views of relevant Indigenous organisations with respect to the matters identified under section 10.52...

1.3 NSW Murray-Darling Basin Fractured Rock WRP Area

The NSW Murray - Darling Basin Fractured Rock Water Resource Plan area covers the entire NSW portion of the Murray Darling Basin (MDB). The WRP area encapsulates nine SDL resource units as shown in Figure 1.

These are:

- Adelaide Fold Belt (GS10)
- Inverell Basalt (GS18)
- Kanmantoo Fold Belt (GS19)
- Lachlan Fold Belt (GS20)
- Liverpool Ranges Basalt (GS22)
- New England Fold Belt (GS37)
- Orange Basalt (GS39)
- Warrumbungle Basalt (GS49)
- Young Granite (GS51)

Collectively the WRP area covers 597,926 km² with the basement geology extending laterally beneath both the alluvial and porous rock groundwater resource units. Only twenty three percent of the NSW MDB landscape (approx. 137, 500 km²) is covered by the outcrop of these fractured rocks.

The larger portion of the fractured rock systems is buried and forms the basement for the overlying porous rocks and alluvial groundwater resource units covered in other water resource plans.

The groundwater resources of the WRP area include all of the groundwater stored within the fractures, joints, bedding planes, faults and cavities within the rock mass for the above SDL resource units. It also includes alluvial sediments that overly the fractured rock that have not been separately mapped out and incorporated into other water resource plans as individual SDL resource units. This alluvial cover is typically spatially restricted and/or limited in depth.



Department of Industry

NSW MURRAY-DARLING BASIN FRACTURED ROCK WRP AREA SDL RESOURCE UNITS

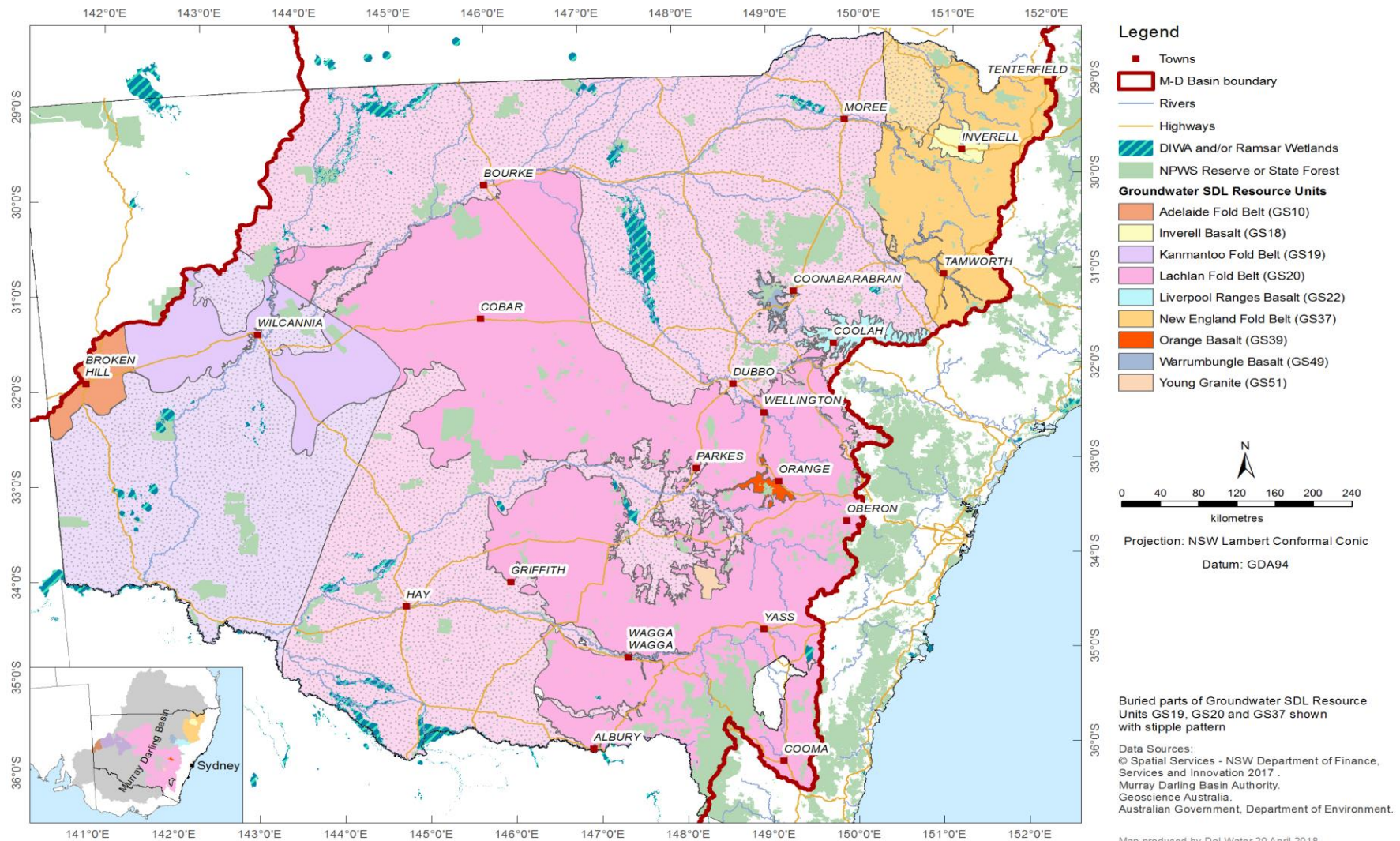


Figure 1. GW6 NSW Murray-Darling Basin Fractured Rock Water Resource Plan Area

2 Consultation

2.1 Broad public consultation

Stakeholder consultation is an essential part of the development of NSW WRPs and was undertaken throughout the development of the NSW Murray-Darling Basin Fractured Rock WRP. The general public and stakeholders had opportunity to provide comment during the early phase of WRP development through the Status and Issues phase (Section 2.1.1) and then again in the later stages of WRP development during the public exhibition phase (Section 2.1.2).

2.1.1 Status and issues phase

The NSW Murray-Darling Basin Fractured Rock WRP Status and Issues Paper (NSW Department of Industry) was released for public comment on 4 August 2017. This can be viewed at www.industry.nsw.gov.au/water/plans-programs/water-resource-plans/status

Ten public submissions on this paper were received and within these submissions 28 issues were raised. Issues raised in submissions were logged on the Submissions Database System. This system was developed specifically for capturing comments made to the NSW Department of Industry (now Department of Planning, Industry and Environment) during targeted consultation, as formal written submissions following public exhibition, and by the stakeholder advisory or other panels.

An Issues Assessment Report was prepared by the NSW Department of Industry for internal and inter-agency analysis, as well as for consideration of the Groundwater Stakeholder Advisory Panel. The Issues Assessment Report informed decisions for option prioritisation leading into the Strategy and Rule Development Phase of WRP development.

2.1.2 Public exhibition phase

The Water Sharing Plan for the NSW Murray-Darling Basin Fractured Rock Groundwater Sources 2020 and draft NSW Murray-Darling Basin Fractured Rock WRP were released for public comment on the 22nd July 2019. They can be viewed at (<https://www.industry.nsw.gov.au/water/plans-programs/water-resource-plans/drafts>).

During this phase Department of Planning, Industry and Environment will communicate with stakeholders in a number of ways.

- Stakeholder specific consultations
- Public information sessions (early evening sessions)
- Department of Planning, Industry and Environment website
- Submission email address
- Telephone number for inquiries
- Have Your Say website
- One-on-One consultations (where appropriate)
- Emails to stakeholders
- Local media – media releases
- Social media – tile advertising
- Local press advertising

The NSW Department of Industry invited submissions on the draft WRP and amended WSP. Supporting documents were made available to provide context and background information.

Public submissions received on the draft WRP and amended WSP will be prioritised and assessed with any new issues progressed with further consultation to be undertaken where required.

2.2 Targeted Consultation

Targeted consultation was undertaken for groundwater WRPs through a Groundwater Stakeholder Advisory Panel (SAP). The SAP consists of representatives of key stakeholders and government agencies. Their role is to provide a forum where draft elements of the WRP could be reviewed, and the various interests and views put forward and discussed to promote common understanding. The SAP was the focal point for targeted consultation for this plan.

2.2.1 NSW Groundwater SAP

The Groundwater SAP, established in August 2017 takes its membership from the following stakeholder groups or interests:

- Department of Planning, Industry and Environment
- Office of Environment and Heritage (OEH)
- Murray Darling Basin Authority
- Seven regional representatives of the NSW Irrigators Council
- NSW Nature Conservation Council
- Murray Lower Darling Rivers Indigenous Nations (MLDRIN)
- Northern Basin Aboriginal Nations (NBAN)
- Inland Rivers Network
- NSW Minerals Council
- Local Government NSW

The SAP Terms of Reference can be viewed here (<https://www.water.nsw.gov.au/water-management/water-resource-plans/Groundwater-SAP-terms-of-reference.pdf>). Broadly, they are an advisory panel that have been charged with helping to identify issues, examine options, and provide Department of Planning, Industry and Environment with feedback and advice throughout the development of WRPs.

The number of SAP meetings held as part of the Groundwater WRP development and the issues that were discussed at these meetings can be seen in Table 1.

Table 1: Groundwater WRP SAP Meetings

| SAP Meeting (Number & Description) | Location | Date |
|---|-------------|-------------------|
| SAP Meeting 1: - <ul style="list-style-type: none"> • Introduction to the SAP and the Terms of Reference • WRP Process – Road Map • Status and Issues • Resource Descriptions • WRP Evaluation Report • Risk Assessment • The Way Forward | Sydney, NSW | 08 September 2017 |
| SAP Meeting 2: - | Sydney, | 31 October |

| | | |
|---|-------------|-------------------------------|
| <ul style="list-style-type: none"> • Resource Descriptions and Risk Assessment - update • Sustainable Diversions Limits and Long Term Average Annual Extraction Limits • Entitlements • Groundwater Dependent Ecosystems • Issues assessments • Consultation strategy | NSW | 2017 |
| <p>SAP Meeting 3:-</p> <ul style="list-style-type: none"> • Water Renewal Task Force • Modelling • IR Guideline • Indigenous Consultation • Compliance with LTAAEL • Permitted Take (MDBA) <ul style="list-style-type: none"> • SDL Compliance • Groundwater Amendments Disallowance • Permitted Take • Issues Assessment Report • Risk Assessment Feedback Report | Sydney, NSW | 14 March 2018 |
| <p>SAP Meeting 4:-</p> <ul style="list-style-type: none"> • GW WRP development....The road ahead • SDL/LTAAEL Amended Policy Proposal • Annual Permitted Take/SDL Compliance • Recharge/Specification Environmental Water • GDE Policy Proposal • WSP Policy Proposals; <ol style="list-style-type: none"> 1. Local Impacts Management, 2. Distance Rules, 3. Account Management Rules, 4. Trade, 5. Contamination Sources 6. Connectivity • WSP/Split Merge Process | Sydney, NSW | 17 May 2018 |
| <p>SAP Meeting 5:-</p> <ul style="list-style-type: none"> • Lachlan Alluvium Water Resource Plan • Lachlan Alluvium Water Sharing Plan • Lachlan Alluvium Water Quality Management Plan • NSW Groundwater Environmental Monitoring, Evaluation and Reporting Plan • Account management Rules, Carryover and Available Water Determinations • Aboriginal Engagement / Cultural Water for the Ngemba Billabong | Sydney, NSW | 15 th August 2018 |
| <p>SAP Meeting 6:-</p> <ul style="list-style-type: none"> • Final Lachlan Alluvium Water Resource Plan (WRP) – summary of changes (public exhibition and MDBA assessment feedback) • Progress on the Macquarie-Castlereagh, Murrumbidgee and Gwydir Alluvium WRP - summary of changes (public exhibition) • Update on progress on the remaining draft Groundwater Water | Sydney, NSW | 25 th January 2019 |

| | | |
|----------------|--|--|
| Resource Plans | | |
|----------------|--|--|

2.2.2 Workshops for all stakeholder advisory panels

The department convened two All SAP workshops during the course of WRP development. Both workshops were held in Sydney, the first on 11 – 12 December 2017 and the second on 5 – 6 June 2018. Attendees included representatives from all WRP SAP committees and key NSW government agencies including the MDBA and CEWO. The first All SAP workshop covered three main topics:

- NSW Government’s response to recent reviews and how the Department of Planning, Industry and Environment will approach its responsibilities within the Murray-Darling Basin
- Key NSW policy issues requiring resolution in order to progress WRP development
- How SAPs and agencies can work together to deliver the water resource plans over the next 12–18 months.

The second All SAP workshop covered seven main topics:

- State-wide planning assumptions
- The WRP including the LTWP, Risk Assessment and Water Quality Management Plan
- MDBA compliance framework
- Water Renewal Taskforce update
- First Nation engagement and cultural water
- Northern Basin Floodplain Harvesting and Northern watering event and Southern Basin SDL Adjustment Mechanism and Pre-requisite Policy Measures
- Groundwater policy update

2.3 First Nation Consultation

The NSW Murray-Darling Basin Fractured Rock WRP area is located within the traditional lands of, and is significant to, the Barkindji, Barapa Barapa, Bigambul, Budjiti, Euahlayi, Githabul, Gomeroi, Guwamu, Kambuwal, Kunja, Kwiambul, Maljangapa, Maraura, Murrawarri, Muthi Muthi, Nari Nari, Ngarabal, Ngemba, Ngiyampaa, Ngunnawal, Ngunnawal, Nyeri Nyeri, Tati Tati, Wadi Wadi, Wailwan, Weki Weki, Wemba Wemba, Wiradjuri, Yita Yita and Yorta Yorta Nations and traditional owners. Department of Planning, Industry and Environment has spent time engaging and consulting traditional owners of these people to identify and record objectives and outcomes in regard to Aboriginal spiritual and cultural values and uses within the NSW Murray-Darling Basin Fractured Rock WRP area.

Consultation with traditional owners was undertaken using a nation-based model. Department of Planning, Industry and Environment facilitated the gathering of cultural information from traditional owners. The reports including the development of cultural objectives, values and uses are attached in Attachments A to CC.

2.3.1 Face to Face Interviews

A series of face-to-face interviews are being undertaken with Senior Traditional Owners (TOs). Senior TOs who participate in the face-to-face interviews are drawn from three separate categories – Grassroots, Native Title applicants and suggestions from other interview participants. Several TOs participated in these interviews, which represented a large number of people in their own family groups and spoke for a broad range of communities and different areas of Nations. These interviews assisted in formulating the culturally appropriate discussion undertaken in the.

- **Barkindji Nation -**
- **Barapa Barapa Nation -**
- **Bigambul Nation -**
- **Budjiti Nation -**
- **Euahlayi Nation -**
- **Githabul Nation -**
- **Gomeroi Nation.** - Four workshops were held in April 2018. A total of 31 participants, including 30 Gomeroi Traditional Owners attended.
- **Guwamu Nation -**
- **Kambuwal Nation -**
- **Kunja Nation -**
- **Kwiambul Nation -**
- **Maljangapa Nation -**
- **Maraura Nation -**
- **Murrawarri Nation -**
- **Muthi Muthi Nation –**
- **Nari Nari Nation.** - In total, four Senior Traditional Owners representing two different family groups were interviewed and spoke for a broad range of communities and different areas of Nari Nari Country.
- **Ngarabal Nation -**
- **Ngemba Nation** - Seven Traditional Owners representing nine different family groups and approximately 2000 community members were interviewed and spoke for a broad range of communities and different areas of Ngemba Country.
- **Ngiyampaa Nation** - Eight Senior Traditional Owners were interviewed. They represented 15 different family groups and approximately 1100 people of the Ngiyampaa nation
- **Ngunnawal Nation:**
- **Nyeri Nyeri Nation -**
- **Tati Tati Nation -**
- **Wadi Wadi Nation -**
- **Wailwan Nation -**
- **Weki Weki Nation -**
- **Wemba Wemba Nation -**
- **Wiradjuri Nation -**
- **Yita Yita Nation** - Seven Traditional Owners were interviewed. These Traditional Owners represented 7 different family groups, represented different people and spoke for a broad range of communities and different areas of Yita Yita Nation Country.
- **Yorta Yorta Nation -**

2.3.2 Workshops

Following on from the face-to-face interviews First Nation consultation workshops were undertaken. To date workshops have been held and finalised and in the following Nations:

- **Barkindji Nation -**
- **Barapa Barapa Nation -**
- **Bigambul Nation -**
- **Budjiti Nation -**
- **Euahlayi Nation -**
- **Githabul Nation -**

- **Gomeroi Nation.** - Four workshops were held in April 2018. A total of 31 participants, including 30 Gomeroi Traditional Owners attended.
- **Guwamu Nation -**
- **Kambuwal Nation -**
- **Kunja Nation -**
- **Kwiambul Nation -**
- **Maljangapa Nation -**
- **Maraura Nation -**
- **Murrawarri Nation -**
- **Muthi Muthi Nation –**
- **Nari Nari Nation.** - One workshop was held in Hay in November 2018. A total of 8 participants attended.
- **Ngarabal Nation -**
- **Ngemba Nation** - Two workshops were held in October and November 2018. A total of 13 Ngemba Traditional Owners attended
- **Ngiyampaa Nation** - Three workshops were held in July 2018. A total of 17 participants, including 5 Traditional Owners attended the workshops
- **Ngunnawal Nation:**
- **Nyeri Nyeri Nation -**
- **Tati Tati Nation -**
- **Wadi Wadi Nation** - A two day workshop was held in October 2018 with approximately 60 participants attending.
- **Wailwan Nation -**
- **Weki Weki Nation -**
- **Wemba Wemba Nation -**
- **Wiradjuri Nation -**
- **Yita Yita Nation** - A one-day Workshop was held in April 2019 with a total of 8 participants attending.
- **Yorta Yorta Nation -**

Common themes were used to guide discussion in the workshops. These were established during the face-to-face interviews and included:

- Water is life
- Healthy Country and people
- Cultural continuity and revival
- Custodianship and jurisdiction
- Compensation and redress
- Management and control
- Communication and partnerships
- Water access
- Water quality
- Communication and input on water from Department of Planning, Industry and Environment.

2.3.3 Consultation Outcomes

Reports on the outcomes of the consultation with each nation group will be included as attachments A to CC of this Consultation report as they become available.

These reports demonstrate that:

- The WRP was developed in a way that had genuine regard to objectives and outcomes in respect of social, spiritual and cultural values and uses of the water resources by Traditional Owners.

Consultation with relevant Indigenous organisations was undertaken, including with the Northern Basin Aboriginal Nations and Murray Lower Darling Rivers Indigenous Nations.

In addition to consulting with Traditional Owners, NSW consulted with several organisations (e.g. native title, LALCS) Murdi Paaki working group, MLDRIN and NBAN. This demonstrates that:

- The consultation had regard to the views of relevant Indigenous organisations with respect to inclusion of Indigenous representation in the preparation and implementation of the plan.
- The consultation had regard to the views of relevant Indigenous organisations with respect to Indigenous social, cultural, spiritual and customary objectives, and strategies for achieving these objectives.
- The consultation had regard to the views of relevant Indigenous organisations with respect to encouragement of active and informed participation of Indigenous people.
- The consultation had regard to the views of relevant Indigenous organisations with respect to risks to Indigenous values and Indigenous uses arising from the use and management of the water resources of the water resource plan area.
- The consultation has regard to the views of Indigenous people with respect to cultural associations with the groundwater resources of this WRPA.

The consultation with the First Nations included the outcomes listed in Table 2.

Table 2. First Nations consultation outcomes.

| Section | Requirement | Outcome |
|-------------|---|--|
| 10.52(1) | WRP identifies objectives and outcomes toward the management of the water resource desirable to Indigenous people. | Consultation completed in conjunction with Murray Lower Darling Rivers Indigenous Nations (MLDRIN) and Northern Basin Aboriginal Nations (NBAN) Consultation completed in conjunction with MLDRIN and NBAN. |
| 10.52(2) | WRP developed with genuine regard to objectives and outcomes in respect of social, spiritual and cultural values and uses by Indigenous people. | An overview of the objectives and values are in Section 1.3.1, of the NSW MDB Fractured Rock WRP. |
| 10.53(1) | That consultation with relevant Indigenous organisations was undertaken, including with the Murray Lower Darling Rivers Indigenous Nations. | MLDRIN assisted as nation organisers and had an important role in the consultation process. |
| 10.53(1)(a) | WRP prepared having regard to the views of relevant Indigenous organisations with respect to native | Discussions on native title rights, native title claims and Indigenous Land Use Agreements and the Native Title Act 1993 in relation to the |

| | | |
|-------------|---|---|
| | title rights, native title claims and Indigenous Land Use Agreements provided for by the Native Title Act 1993 | water resources of the Lachlan catchment. A letter was sent out to NTS Corp to advise on further consultations on country and how they would like to be engaged. |
| 10.53(1)(b) | WRP prepared having regard to the views of relevant Indigenous organisations towards registered Aboriginal heritage relating to the water resources of the WRPA | Local Aboriginal Lands Councils were invited; opportunities arose for them to speak of any listed sites on the heritage register throughout the workshop sessions. |
| 10.53(1)(c) | WRP prepared having regard to the inclusion of Indigenous representation in the preparation and implementation of the plan | MLDRIN provided direct input via recommendations on the appropriate Traditional Owners to engage. This resulted in the relevant Traditional Owners for the NSW Fractured Rock WRP area being represented. More details on Indigenous representation can be seen in the First Nations Consultation Reports, Attachments A to BB of Schedule C. |
| 10.53(1)(d) | WRP prepared having regard to the views of relevant Indigenous organisations towards Indigenous social, cultural, spiritual and customary objectives and strategies for achieving these objectives | Consultation included what people would want in the future. More detail on strategies can be seen in the First Nations Consultation Reports, Attachments A to D of Schedule C |
| 10.53(1)(e) | WRP prepared having regard to the views of relevant Indigenous organisations towards encouragement of active and informed participation of Indigenous people | Relationships developed with Elders and a shared understanding of water management prior to conducting workshops with the broader group of First Nation Traditional Owners. More detail on the engagement process can be seen in the First Nations Consultation Reports, Attachments A to D of Schedule C |
| 10.53(1)(f) | WRP prepared having regard to the views of relevant Indigenous organisations towards risks to Indigenous values and Indigenous uses arising from the use and management of the water resources of the water resource plan area? | The risks to Indigenous Values and Uses are outline in First Nations Consultation Reports, Attachments A to BB of Schedule C. |
| 10.54 | That the consultation has regard to the views of Indigenous people with respect to cultural flows? | Additional consultation underway as part of the Basin Plan commitments package following the Basin Plan Amendment deal. |

Department of Planning, Industry and Environment is working with MDBA and MLDRIN and conversations will be continued

| | | |
|-------|--|--|
| 10.55 | WRP provides at least the same level of protection of Indigenous values and Indigenous uses as provided in a transitional or an interim water resource plan for the WRPA | Improved objectives ensure protection for Indigenous values and uses aligned with practical strategies and quantifiable performance indicators |
|-------|--|--|

DRAFT

Attachment A. Barkindji First Nations Consultation

This report outlines the process and findings of consultation undertaken with the Barkindji Nation for the development of water resource plans (WRPs) in NSW, for accreditation by the Murray–Darling Basin Authority, under requirements of Chapter 10 of the Murray–Darling Basin Plan. It outlines the consultation process and methodology, making recommendations for future consultation with First Nations people. It presents findings on the objectives and outcomes of the Barkindji people for the management of their water-dependent values and uses.

DRAFT

Attachment B. Barapa Barapa First Nations Consultation

This report outlines the process and findings of consultation undertaken with the Barapa Barapa Nation for the development of water resource plans (WRPs) in NSW, for accreditation by the Murray–Darling Basin Authority, under requirements of Chapter 10 of the Murray–Darling Basin Plan. It outlines the consultation process and methodology, making recommendations for future consultation with First Nations people. It presents findings on the objectives and outcomes of the Barapa Barapa people for the management of their water-dependent values and uses.

DRAFT

Attachment C. Bigambul First Nations Consultation

This report outlines the process and findings of consultation undertaken with the Bigambul Nation for the development of water resource plans (WRPs) in NSW, for accreditation by the Murray–Darling Basin Authority, under requirements of Chapter 10 of the Murray–Darling Basin Plan. It outlines the consultation process and methodology, making recommendations for future consultation with First Nations people. It presents findings on the objectives and outcomes of the Bigambul people for the management of their water-dependent values and uses.

DRAFT

Attachment D. Budjiti First Nations Consultation

This report outlines the process and findings of consultation undertaken with the Budjiti Nation for the development of water resource plans (WRPs) in NSW, for accreditation by the Murray–Darling Basin Authority, under requirements of Chapter 10 of the Murray–Darling Basin Plan. It outlines the consultation process and methodology, making recommendations for future consultation with First Nations people. It presents findings on the objectives and outcomes of the Budjiti people for the management of their water-dependent values and uses.

DRAFT

Attachment E. Euahlayi First Nations Consultation

This report outlines the process and findings of consultation undertaken with the Euahlayi Nation for the development of water resource plans (WRPs) in NSW, for accreditation by the Murray–Darling Basin Authority, under requirements of Chapter 10 of the Murray–Darling Basin Plan. It outlines the consultation process and methodology, making recommendations for future consultation with First Nations people. It presents findings on the objectives and outcomes of the Euahlayi people for the management of their water-dependent values and uses.

DRAFT

Attachment F. Githabul First Nations Consultation

This report outlines the process and findings of consultation undertaken with the Githabul Nation for the development of water resource plans (WRPs) in NSW, for accreditation by the Murray–Darling Basin Authority, under requirements of Chapter 10 of the Murray–Darling Basin Plan. It outlines the consultation process and methodology, making recommendations for future consultation with First Nations people. It presents findings on the objectives and outcomes of the Githabul people for the management of their water-dependent values and uses.

DRAFT

Attachment G. Gomeroi First Nations Consultation

This report outlines the process and findings of consultation undertaken with the Gomeroi Nation for the development of water resource plans (WRPs) in NSW, for accreditation by the Murray–Darling Basin Authority, under requirements of Chapter 10 of the Murray–Darling Basin Plan. It outlines the consultation process and methodology, making recommendations for future consultation with First Nations people. It presents findings on the objectives and outcomes of the Gomeroi people for the management of their water-dependent values and uses.

DRAFT

Attachment H. Guwamu First Nations Consultation

This report outlines the process and findings of consultation undertaken with the Guwamu Nation for the development of water resource plans (WRPs) in NSW, for accreditation by the Murray–Darling Basin Authority, under requirements of Chapter 10 of the Murray–Darling Basin Plan. It outlines the consultation process and methodology, making recommendations for future consultation with First Nations people. It presents findings on the objectives and outcomes of the Guwamu people for the management of their water-dependent values and uses.

DRAFT

Attachment I. Kambuwal First Nations Consultation

This report outlines the process and findings of consultation undertaken with the Kambuwal Nation for the development of water resource plans (WRPs) in NSW, for accreditation by the Murray–Darling Basin Authority, under requirements of Chapter 10 of the Murray–Darling Basin Plan. It outlines the consultation process and methodology, making recommendations for future consultation with First Nations people. It presents findings on the objectives and outcomes of the Kambuwal people for the management of their water-dependent values and uses.

DRAFT

Attachment J. Kunja First Nations Consultation

This report outlines the process and findings of consultation undertaken with the Kunja Nation for the development of water resource plans (WRPs) in NSW, for accreditation by the Murray–Darling Basin Authority, under requirements of Chapter 10 of the Murray–Darling Basin Plan. It outlines the consultation process and methodology, making recommendations for future consultation with First Nations people. It presents findings on the objectives and outcomes of the Kunja people for the management of their water-dependent values and uses.

DRAFT

Attachment K. Kwiambul First Nations Consultation

This report outlines the process and findings of consultation undertaken with the Kwiambul Nation for the development of water resource plans (WRPs) in NSW, for accreditation by the Murray–Darling Basin Authority, under requirements of Chapter 10 of the Murray–Darling Basin Plan. It outlines the consultation process and methodology, making recommendations for future consultation with First Nations people. It presents findings on the objectives and outcomes of the Kwiambul people for the management of their water-dependent values and uses.

DRAFT

Attachment L. Maljangapa First Nations Consultation

This report outlines the process and findings of consultation undertaken with the Maljangapa Nation for the development of water resource plans (WRPs) in NSW, for accreditation by the Murray–Darling Basin Authority, under requirements of Chapter 10 of the Murray–Darling Basin Plan. It outlines the consultation process and methodology, making recommendations for future consultation with First Nations people. It presents findings on the objectives and outcomes of the Maljangapa people for the management of their water-dependent values and uses.

DRAFT

Attachment M. Maraura First Nations Consultation

This report outlines the process and findings of consultation undertaken with the Maraura Nation for the development of water resource plans (WRPs) in NSW, for accreditation by the Murray–Darling Basin Authority, under requirements of Chapter 10 of the Murray–Darling Basin Plan. It outlines the consultation process and methodology, making recommendations for future consultation with First Nations people. It presents findings on the objectives and outcomes of the Maraura people for the management of their water-dependent values and uses.

DRAFT

Attachment N. Murrawarri First Nations Consultation

This report outlines the process and findings of consultation undertaken with the Murrawarri Nation for the development of water resource plans (WRPs) in NSW, for accreditation by the Murray–Darling Basin Authority, under requirements of Chapter 10 of the Murray–Darling Basin Plan. It outlines the consultation process and methodology, making recommendations for future consultation with First Nations people. It presents findings on the objectives and outcomes of the Murrawarri people for the management of their water-dependent values and uses.

DRAFT

Attachment O. Muthi Muthi First Nations Consultation

This report outlines the process and findings of consultation undertaken with the Muthi Muthi Nation for the development of water resource plans (WRPs) in NSW, for accreditation by the Murray–Darling Basin Authority, under requirements of Chapter 10 of the Murray–Darling Basin Plan. It outlines the consultation process and methodology, making recommendations for future consultation with First Nations people. It presents findings on the objectives and outcomes of the Muthi Muthi people for the management of their water-dependent values and uses.

DRAFT

Attachment P. Nari Nari First Nations Consultation

This report outlines the process and findings of consultation undertaken with the Nari Nari Nation for the development of water resource plans (WRPs) in NSW, for accreditation by the Murray–Darling Basin Authority, under requirements of Chapter 10 of the Murray–Darling Basin Plan. It outlines the consultation process and methodology, making recommendations for future consultation with First Nations people. It presents findings on the objectives and outcomes of the Nari Nari people for the management of their water-dependent values and uses.

DRAFT

Attachment Q. Ngarabal First Nations Consultation

This report outlines the process and findings of consultation undertaken with the Ngarabal Nation for the development of water resource plans (WRPs) in NSW, for accreditation by the Murray–Darling Basin Authority, under requirements of Chapter 10 of the Murray–Darling Basin Plan. It outlines the consultation process and methodology, making recommendations for future consultation with First Nations people. It presents findings on the objectives and outcomes of the Ngarabal people for the management of their water-dependent values and uses.

DRAFT

Attachment R. Ngemba First Nations Consultation

This report outlines the process and findings of consultation undertaken with the Ngemba Nation for the development of water resource plans (WRPs) in NSW, for accreditation by the Murray–Darling Basin Authority, under requirements of Chapter 10 of the Murray–Darling Basin Plan. It outlines the consultation process and methodology, making recommendations for future consultation with First Nations people. It presents findings on the objectives and outcomes of the Ngemba people for the management of their water-dependent values and uses.

DRAFT

Attachment S. Ngiyampaa First Nations Consultation

This report outlines the process and findings of consultation undertaken with the Ngiyampaa Nation for the development of water resource plans (WRPs) in NSW, for accreditation by the Murray–Darling Basin Authority, under requirements of Chapter 10 of the Murray–Darling Basin Plan. It outlines the consultation process and methodology, making recommendations for future consultation with First Nations people. It presents findings on the objectives and outcomes of the Ngiyampaa people for the management of their water-dependent values and uses.

DRAFT

Attachment T. Ngunnawal First Nations Consultation

This report outlines the process and findings of consultation undertaken with the Ngunnawal Nation for the development of water resource plans (WRPs) in NSW, for accreditation by the Murray–Darling Basin Authority, under requirements of Chapter 10 of the Murray–Darling Basin Plan. It outlines the consultation process and methodology, making recommendations for future consultation with First Nations people. It presents findings on the objectives and outcomes of the Ngunnawal people for the management of their water-dependent values and uses.

DRAFT

Attachment U. Nyeri Nyeri First Nations Consultation

This report outlines the process and findings of consultation undertaken with the Nyeri Nyeri Nation for the development of water resource plans (WRPs) in NSW, for accreditation by the Murray–Darling Basin Authority, under requirements of Chapter 10 of the Murray–Darling Basin Plan. It outlines the consultation process and methodology, making recommendations for future consultation with First Nations people. It presents findings on the objectives and outcomes of the Nyeri Nyeri people for the management of their water-dependent values and uses.

DRAFT

Attachment V. Tati Tati First Nations Consultation

This report outlines the process and findings of consultation undertaken with the Tati Tati Nation for the development of water resource plans (WRPs) in NSW, for accreditation by the Murray–Darling Basin Authority, under requirements of Chapter 10 of the Murray–Darling Basin Plan. It outlines the consultation process and methodology, making recommendations for future consultation with First Nations people. It presents findings on the objectives and outcomes of the Tati Tati people for the management of their water-dependent values and uses.

DRAFT

Attachment W. Wadi Wadi First Nations Consultation

This report outlines the process and findings of consultation undertaken with the Wadi Wadi Nation for the development of water resource plans (WRPs) in NSW, for accreditation by the Murray–Darling Basin Authority, under requirements of Chapter 10 of the Murray–Darling Basin Plan. It outlines the consultation process and methodology, making recommendations for future consultation with First Nations people. It presents findings on the objectives and outcomes of the Wadi Wadi people for the management of their water-dependent values and uses.

DRAFT

Attachment X. Wailwan First Nations Consultation

This report outlines the process and findings of consultation undertaken with the Wailwan Nation for the development of water resource plans (WRPs) in NSW, for accreditation by the Murray–Darling Basin Authority, under requirements of Chapter 10 of the Murray–Darling Basin Plan. It outlines the consultation process and methodology, making recommendations for future consultation with First Nations people. It presents findings on the objectives and outcomes of the Wailwan people for the management of their water-dependent values and uses.

DRAFT

Attachment Y. Weki Weki First Nations Consultation

This report outlines the process and findings of consultation undertaken with the Weki Weki Nation for the development of water resource plans (WRPs) in NSW, for accreditation by the Murray–Darling Basin Authority, under requirements of Chapter 10 of the Murray–Darling Basin Plan. It outlines the consultation process and methodology, making recommendations for future consultation with First Nations people. It presents findings on the objectives and outcomes of the Weki Weki people for the management of their water-dependent values and uses.

DRAFT

Attachment Z. Wemba Wemba First Nations Consultation

This report outlines the process and findings of consultation undertaken with the Wemba Wemba Nation for the development of water resource plans (WRPs) in NSW, for accreditation by the Murray–Darling Basin Authority, under requirements of Chapter 10 of the Murray–Darling Basin Plan. It outlines the consultation process and methodology, making recommendations for future consultation with First Nations people. It presents findings on the objectives and outcomes of the Wemba Wemba people for the management of their water-dependent values and uses.

DRAFT

Attachment AA. Wiradjuri First Nations Consultation

This report outlines the process and findings of consultation undertaken with the Wiradjuri Nation for the development of water resource plans (WRPs) in NSW, for accreditation by the Murray–Darling Basin Authority, under requirements of Chapter 10 of the Murray–Darling Basin Plan. It outlines the consultation process and methodology, making recommendations for future consultation with First Nations people. It presents findings on the objectives and outcomes of the Wiradjuri people for the management of their water-dependent values and uses.

DRAFT

Attachment BB. Yita Yita First Nations Consultation

This report outlines the process and findings of consultation undertaken with the Yita Yita Nation for the development of water resource plans (WRPs) in NSW, for accreditation by the Murray–Darling Basin Authority, under requirements of Chapter 10 of the Murray–Darling Basin Plan. It outlines the consultation process and methodology, making recommendations for future consultation with First Nations people. It presents findings on the objectives and outcomes of the Yita Yita people for the management of their water-dependent values and uses.

DRAFT

Attachment CC. Yorta Yorta First Nations Consultation

This report outlines the process and findings of consultation undertaken with the Yorta Yorta Nation for the development of water resource plans (WRPs) in NSW, for accreditation by the Murray–Darling Basin Authority, under requirements of Chapter 10 of the Murray–Darling Basin Plan. It outlines the consultation process and methodology, making recommendations for future consultation with First Nations people. It presents findings on the objectives and outcomes of the Yorta Yorta people for the management of their water-dependent values and uses.

DRAFT