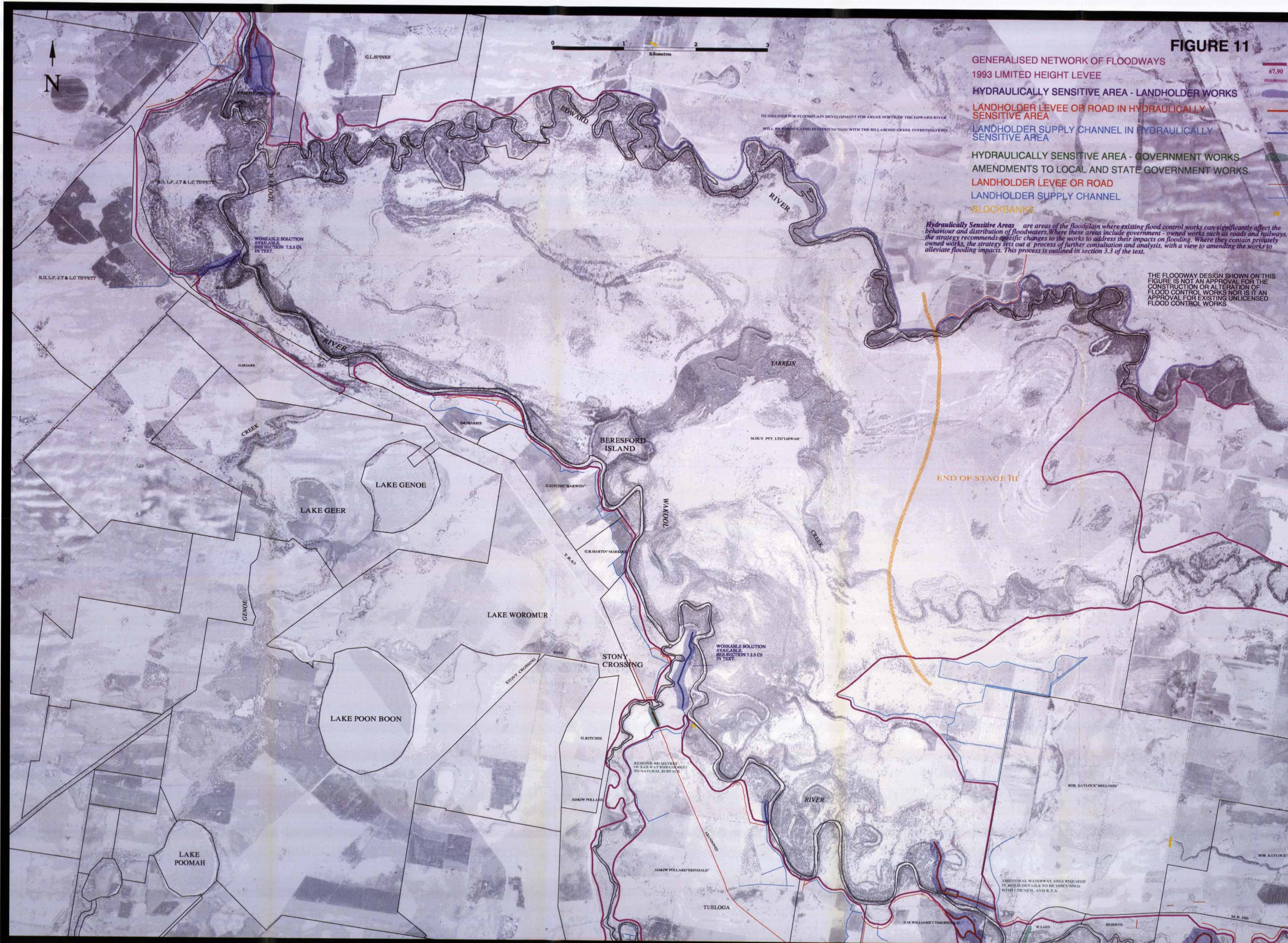


FIGURE 11

- GENERALISED NETWORK OF FLOODWAYS
- 1993 LIMITED HEIGHT LEVEE
- HYDRAULICALLY SENSITIVE AREA - LANDHOLDER WORKS
- LANDHOLDER LEVEE OR ROAD IN HYDRAULICALLY SENSITIVE AREA
- LANDHOLDER SUPPLY CHANNEL IN HYDRAULICALLY SENSITIVE AREA
- HYDRAULICALLY SENSITIVE AREA - GOVERNMENT WORKS
- AMENDMENTS TO LOCAL AND STATE GOVERNMENT WORKS.
- LANDHOLDER LEVEE OR ROAD
- LANDHOLDER SUPPLY CHANNEL
- BLOCKBANKS

*Hydraulically Sensitive Areas* are areas of the floodplain where existing flood control works can significantly affect the behaviour and distribution of floodwaters. Where these areas include government - owned works such as roads and railways, the strategy recommends specific changes to the works to address their impacts on flooding. Where they contain privately owned works, the strategy sets out a process of further consultation and analysis, with a view to amending the works to alleviate flooding impacts. This process is outlined in section 3.3 of the text.

THE FLOODWAY DESIGN SHOWN ON THIS FIGURE IS NOT AN APPROVAL FOR THE CONSTRUCTION OR ALTERATION OF FLOOD CONTROL WORKS NOR IS IT AN APPROVAL FOR EXISTING UNLICENSED FLOOD CONTROL WORKS



WORKABLE SOLUTION AVAILABLE SEE SECTION 7.3.3 C4 IN TEXT.

WORKABLE SOLUTION AVAILABLE SEE SECTION 7.3.3 C4 IN TEXT.

REMOVE 400 METRES OF BARRIERS/AMENDMENT TO NATURAL BEACH

ADDITIONAL WATERWAY AREA REQUIRED IN MORE DETAILS TO BE DETERMINED WITH COUNCIL AND R.T.A.

GUIDELINES FOR FLOODPLAIN DEVELOPMENT FOR AREAS NORTH OF THE EDWARD RIVER WILL BE FORMULATED IN CONJUNCTION WITH THE BILLARONG CREEK INVESTIGATORS

M.R. 180