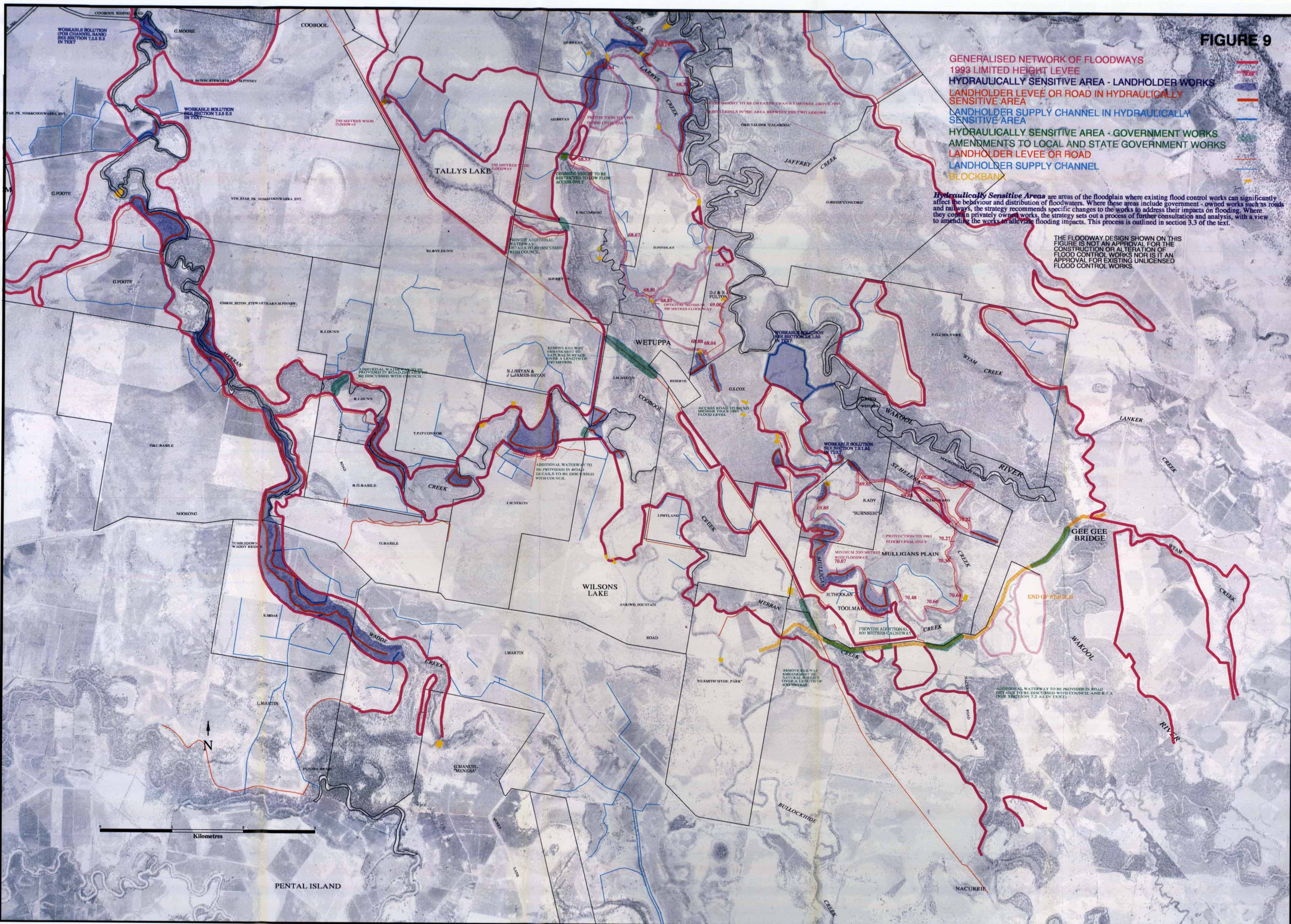


FIGURE 9

- GENERALISED NETWORK OF FLOODWAYS
- 1993 LIMITED HEIGHT LEVEE
- HYDRAULICALLY SENSITIVE AREA - LANDHOLDER WORKS
- LANDHOLDER LEVEE OR ROAD IN HYDRAULICALLY SENSITIVE AREA
- LANDHOLDER SUPPLY CHANNEL IN HYDRAULICALLY SENSITIVE AREA
- HYDRAULICALLY SENSITIVE AREA - GOVERNMENT WORKS
- AMENDMENTS TO LOCAL AND STATE GOVERNMENT WORKS
- LANDHOLDER LEVEE OR ROAD
- LANDHOLDER SUPPLY CHANNEL
- BLOCKBANK

*Hydraulically Sensitive Areas* are areas of the floodplain where existing flood control works can significantly affect the behaviour and distribution of floodwaters. Where these areas include government - owned works such as roads and railways, the strategy recommends specific changes to the works to address their impacts on flooding. Where they consist of privately owned works, the strategy sets out a process of further consultation and analysis, with a view to amending the works to alleviate flooding impacts. This process is outlined in section 3.3 of the text.

THE FLOODWAY DESIGN SHOWN ON THIS FIGURE IS NOT AN APPROVAL FOR THE CONSTRUCTION OR ALTERATION OF FLOOD CONTROL WORKS NOR IS IT AN APPROVAL FOR EXISTING UNLICENSED FLOOD CONTROL WORKS.



WORKABLE SOLUTION FOR CHANNEL BANKS SEE SECTION 7.2.6 B.3 IN TEXT

WORKABLE SOLUTION FOR CHANNEL BANKS SEE SECTION 7.2.6 B.3 IN TEXT

250 METRES WIDE FLOODWAY

CROSSING HEIGHT TO BE RESTRICTED TO LOW FLOW ACCESS ONLY

PROVIDE ADDITIONAL WATERWAY DETAILS TO BE DISCUSSED WITH COUNCIL

REMOVE RAILWAY EMBANKMENT TO NATURAL BARRIER OVER A LENGTH OF 100 METRES

ADDITIONAL WATERWAY TO BE PROVIDED IN ROAD DETAILS TO BE DISCUSSED WITH COUNCIL

ADDITIONAL WATERWAY TO BE PROVIDED IN ROAD DETAILS TO BE DISCUSSED WITH COUNCIL

WORKABLE SOLUTION SEE SECTION 7.2.6 A IN TEXT

PROTECTION TO 1993 FLOOD LEVEL ONLY

MINIMUM 200 METRES WIDE FLOODWAY 70.07

PROVIDE ADDITIONAL 80 METRES CAUSWAY

REMOVE RAILWAY EMBANKMENT TO NATURAL BARRIER OVER A LENGTH OF 100 METRES

ADDITIONAL WATERWAY TO BE PROVIDED IN ROAD DETAILS TO BE DISCUSSED WITH COUNCIL AND S.L.A (SEE SECTION 7.2.3 A IN TEXT)



Kilometres

PENTAL ISLAND