

Stage 2 FMP Floodway Network
Moama-Moulamein Railway to Gee Gee Bridge

Sheet 2 of 5
 Figure 2.2

HYDRAULIC MEASURES
 (Refer Table 4.1)

Issue 1 X Hydraulic Issue ID

Existing flood control work - modifications required

ENVIRONMENTAL MEASURES
 (Refer Table 5.1)

5870 Environmental Issue ID (Murray Wetlands Working Group No.)

1986 Guidelines floodway boundary realigned to encompass FDE site

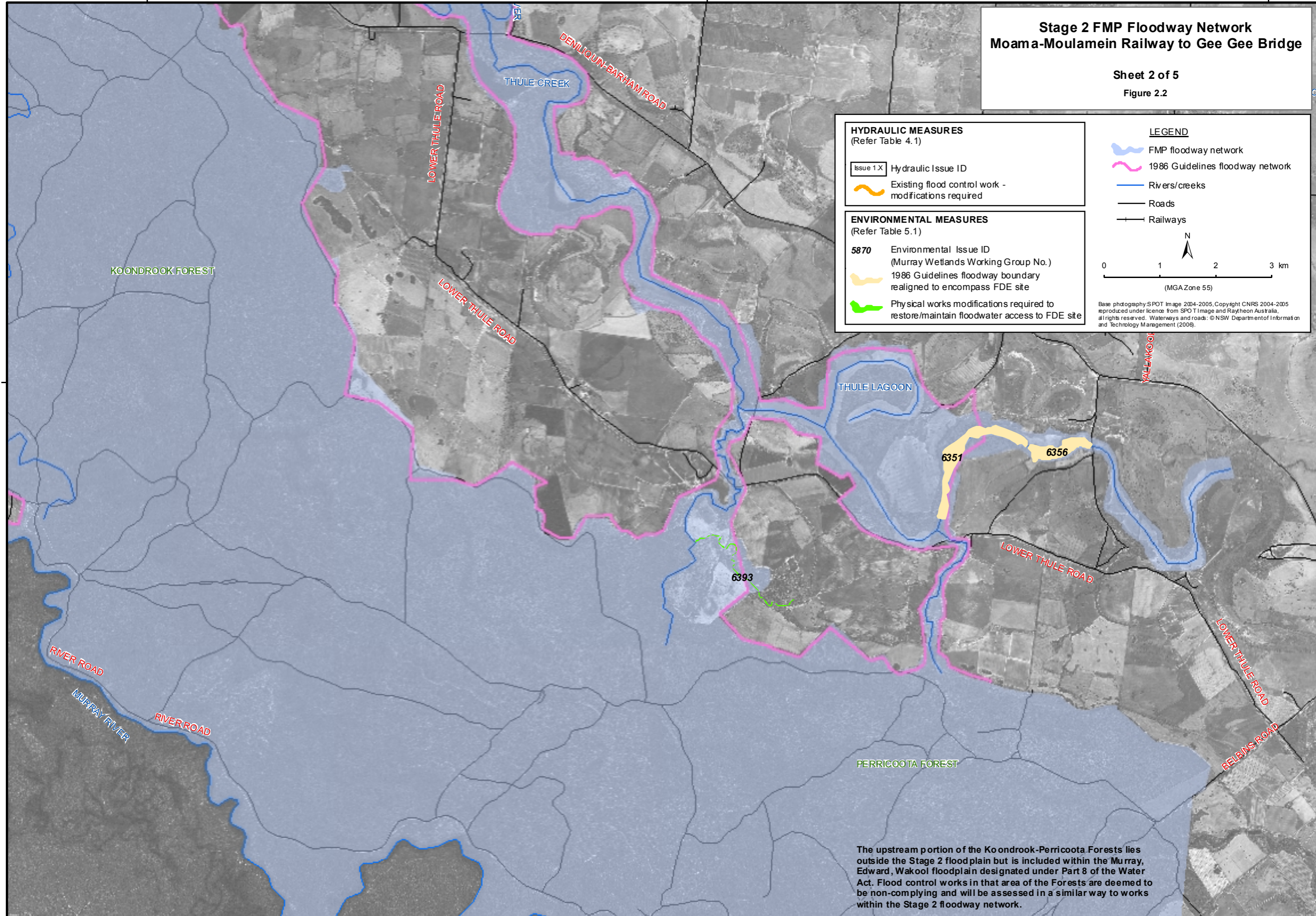
Physical works modifications required to restore/maintain floodwater access to FDE site

LEGEND

- FMP floodway network
- 1986 Guidelines floodway network
- Rivers/creeks
- Roads
- Railways

0 1 2 3 km
 (MGA Zone 55)

Base photography SPOT Image 2004-2005. Copyright CNRS 2004-2005 reproduced under licence from SPOT Image and Raytheon Australia, all rights reserved. Waterways and roads: © NSW Department of Information and Technology Management (2006).



The upstream portion of the Koondrook-Perricoota Forests lies outside the Stage 2 floodplain but is included within the Murray, Edward, Wakool floodplain designated under Part 8 of the Water Act. Flood control works in that area of the Forests are deemed to be non-complying and will be assessed in a similar way to works within the Stage 2 floodway network.