

Groundwater-dependent ecosystems

The Basin Plan 2012 requires that priority environmental assets and ecosystem functions dependent on groundwater are identified, considered and actively managed.

Identifying and protecting groundwater-dependent ecosystems

Groundwater-dependent ecosystems (GDEs) are those that need access to groundwater to meet all or some of the water requirements necessary to maintain their plant and animal communities and ecological processes.

Water sharing plans for groundwater contain a schedule which identifies high-priority, groundwater-dependent ecosystems. These water sharing plans include rules, to protect these ecosystems such as restrictions on the construction of groundwater bores within specified distances from the groundwater-dependent ecosystems.

The Department of Planning, Industry and Environment recently completed a program to identify and prioritise groundwater-dependent ecosystems in NSW.

The *High probability GDE method report* details the method used to identify groundwater-dependent ecosystems and is available from: industry.nsw.gov.au/water/science/groundwater/ecosystems.

Management of groundwater-dependent ecosystems

Proposed changes in the draft *Water Sharing Plan for the NSW Border Rivers Alluvial Groundwater Sources 2020* to manage groundwater-dependent ecosystems include:

- adding the recently identified, high-priority groundwater-dependent ecosystems into the water sharing plan schedule (shown in Figure 1)
- applying default setback distance rules for new water supply works including basic landholder rights bores
 - The proposed distances from a river will be:
 - 40 metres of the top of the high bank of a river for all new water supply works
 - The proposed new distances from a high priority groundwater-dependent ecosystem will be
 - 100 metres if the work will take water for basic landholder rights only
 - 200 metres for all other groundwater works, unless the Minister for Water is satisfied that allowing the work to be located at a lesser distance will have no more than minimal impact on the groundwater dependent ecosystem

The setback distance rules will not apply to a water supply work used only for monitoring, environmental remediation activities or emergency services, or to replacement groundwater works. A replacement groundwater work is defined in the draft *Water Sharing Plan for the NSW Border Rivers Alluvial Groundwater Sources 2020*.

The department will make an initial assessment of applications for new water supply work approvals located within the default setback distances. Water users may have the opportunity to mitigate potential impacts on high-priority, groundwater-dependent ecosystems through conditions on the work approval. These could include conditions such as grout sealing the work to a specified depth, setting extraction limits or changing the proposed location.

Where the initial assessment doesn't identify adequate mitigation measures, the applicant may be required to submit further information, for example, a hydrogeological study, to support the application. This additional information will be considered by the department before the application for approval is determined. Where water supply works are currently located within the default setback distances, the works can continue to be

used. If it becomes evident that there is a decline in the nearby groundwater-dependent ecosystem, investigation into the cause and possible remedial actions will be considered in consultation with the water supply work approval holder.

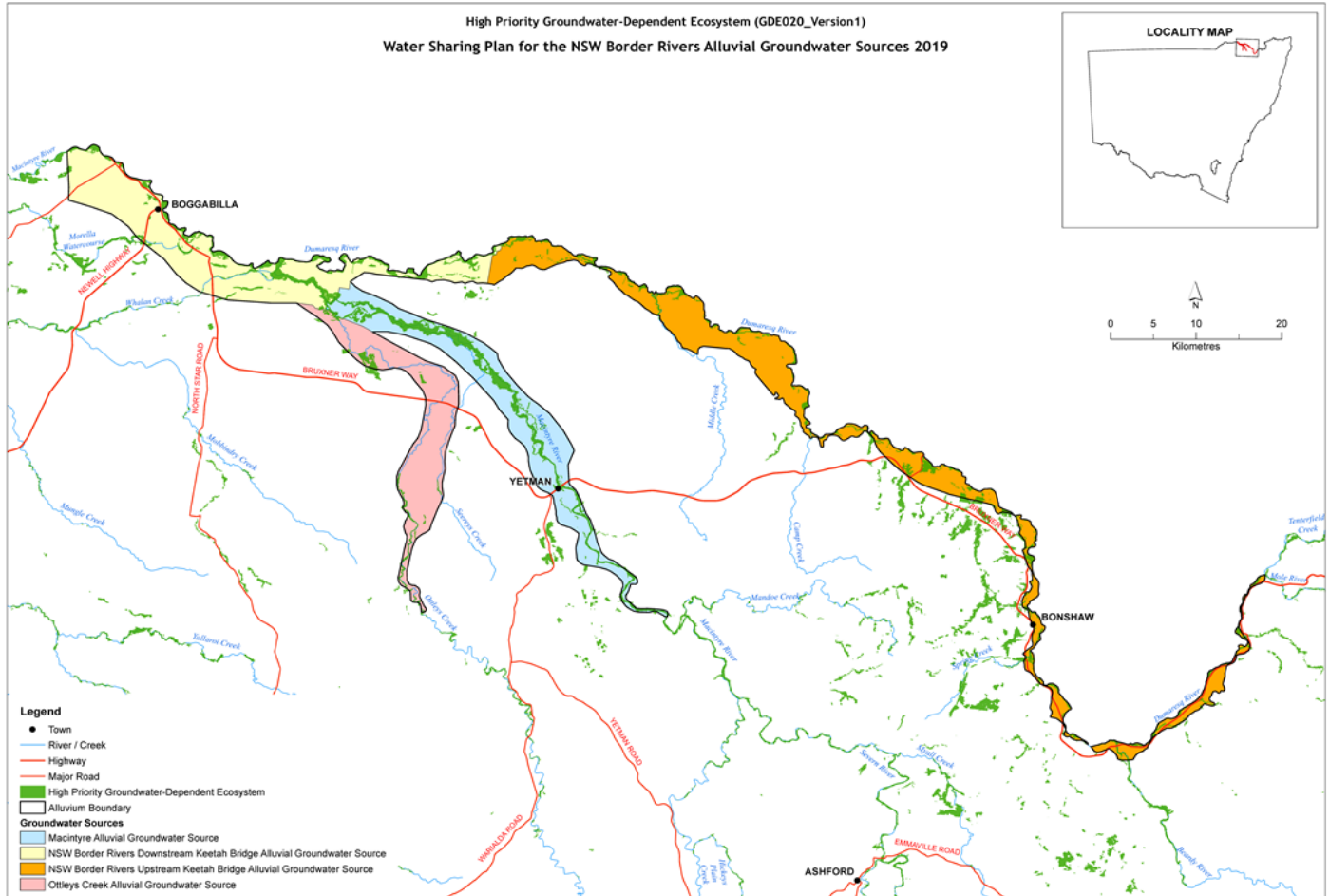


Figure 1: High-priority, groundwater-dependent ecosystems of the NSW Border Rivers Alluvium

More information

The draft *NSW Border Rivers Alluvium Water Resource Plan* and other fact sheets are available from www.industry.nsw.gov.au/water

© State of New South Wales through Department of Planning, Industry and Environment 2019. The information contained in this publication is based on knowledge and understanding at the time of writing (July 2019). However, because of advances in knowledge, users are reminded of the need to ensure that the information upon which they rely is up to date and to check the currency of the information with the appropriate officer of the Department of Planning, Industry and Environment or the user's independent adviser.