

150°0'0"E 150°10'0"E 150°20'0"E 150°30'0"E 150°40'0"E 150°50'0"E



CLYDE RIVER and JERVIS BAY BASIN
BASIN N^o 216
GAUGING STATIONS
March 2011

34°50'0"S

35°0'0"S

35°10'0"S

35°20'0"S

35°30'0"S

35°40'0"S

35°50'0"S

35°0'0"S

35°10'0"S

35°20'0"S

35°30'0"S

35°40'0"S

35°50'0"S

35°0'0"S

35°10'0"S

35°20'0"S

35°30'0"S

35°40'0"S

35°50'0"S

35°0'0"S

35°10'0"S

35°20'0"S

35°30'0"S

35°40'0"S

34°50'0"S

35°0'0"S

35°10'0"S

35°20'0"S

35°30'0"S

35°40'0"S

35°50'0"S

35°0'0"S

35°10'0"S

35°20'0"S

35°30'0"S

35°40'0"S

35°50'0"S

35°0'0"S

35°10'0"S

35°20'0"S

35°30'0"S

35°40'0"S

35°50'0"S

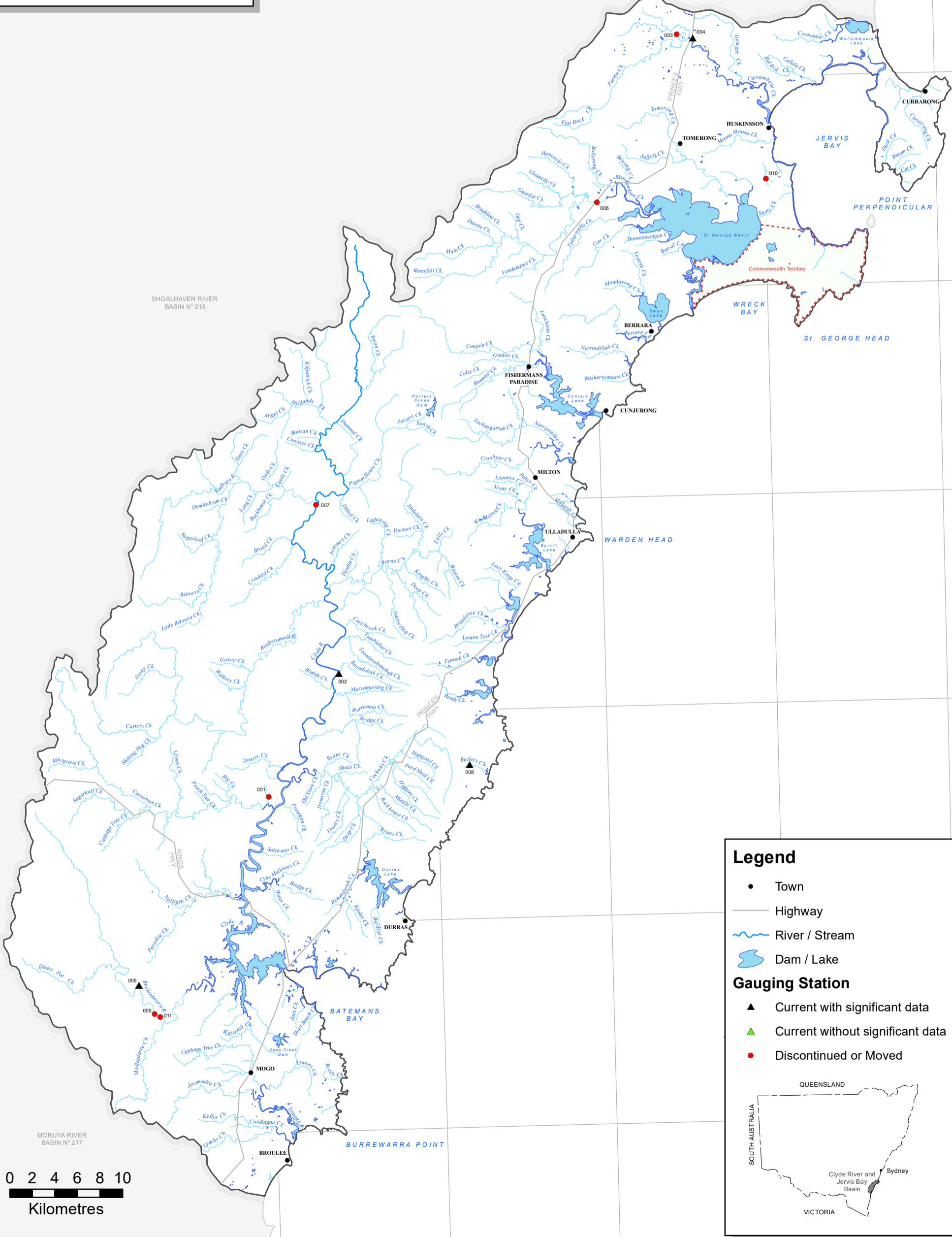
35°0'0"S

35°10'0"S

35°20'0"S

35°30'0"S

35°40'0"S

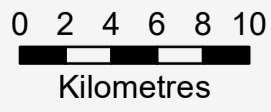


Legend

- Town
- Highway
- ~ River / Stream
- Dam / Lake

Gauging Station

- ▲ Current with significant data
- ▲ Current without significant data
- Discontinued or Moved



CARTOGRAPHY BY: J.C. PETROVIC March 2011

150°0'0"E 150°10'0"E 150°20'0"E 150°30'0"E 150°40'0"E 150°50'0"E

216 CLYDE RIVER & JERVIS BAY BASIN

Site ID	Sitename	Cat	Latitude	Longitude
216001	Currowan at Shallow Crossing (Post Office)	C	-35° 33' 54"	150° 10' 04"
216002	Clyde River at Brooman	A	-35° 28' 05"	150° 14' 22"
216003	Parma Creek at Falls Creek	C	-34° 57' 54"	150° 35' 04"
216004	Currambene Creek at Falls Creek	A	-34° 58' 06"	150° 36' 00"
216005	Buckenbowra River at Buckenbowra No.2	C	-35° 44' 07"	150° 03' 00"
216006	Wandandian Creek at Wandandian	C	-35° 05' 51"	150° 30' 11"
216007	Clyde River at Yadbora	C	-35° 19' 59"	150° 13' 19"
216008	Butlers Creek at Kioloa	A	-35° 32' 37"	150° 21' 53"
216009	Buckenbowra River at Buckenbowra No.3	A	-35° 42' 45"	150° 02' 07"
216010	Moona Moona Creek Near Huskinson	C	-35° 04' 55"	150° 40' 04"
216011	Buckenbowra River at Buckenbowra No.1	C	-35° 44' 17"	150° 03' 20"