

Projects

The NSW Status Report project is an initiative by the Land and Water Commissioner in response to community concerns about monitoring and impacts from coal mining and coal seam gas projects. This report brings together dust monitoring data as reported on company webpages. The aim of the report is to help readers understand the long-term dust trends.

The report combines dust data from projects to create one report for the North West Region of NSW. Only data in raw figures reported on company websites has been used in this report.

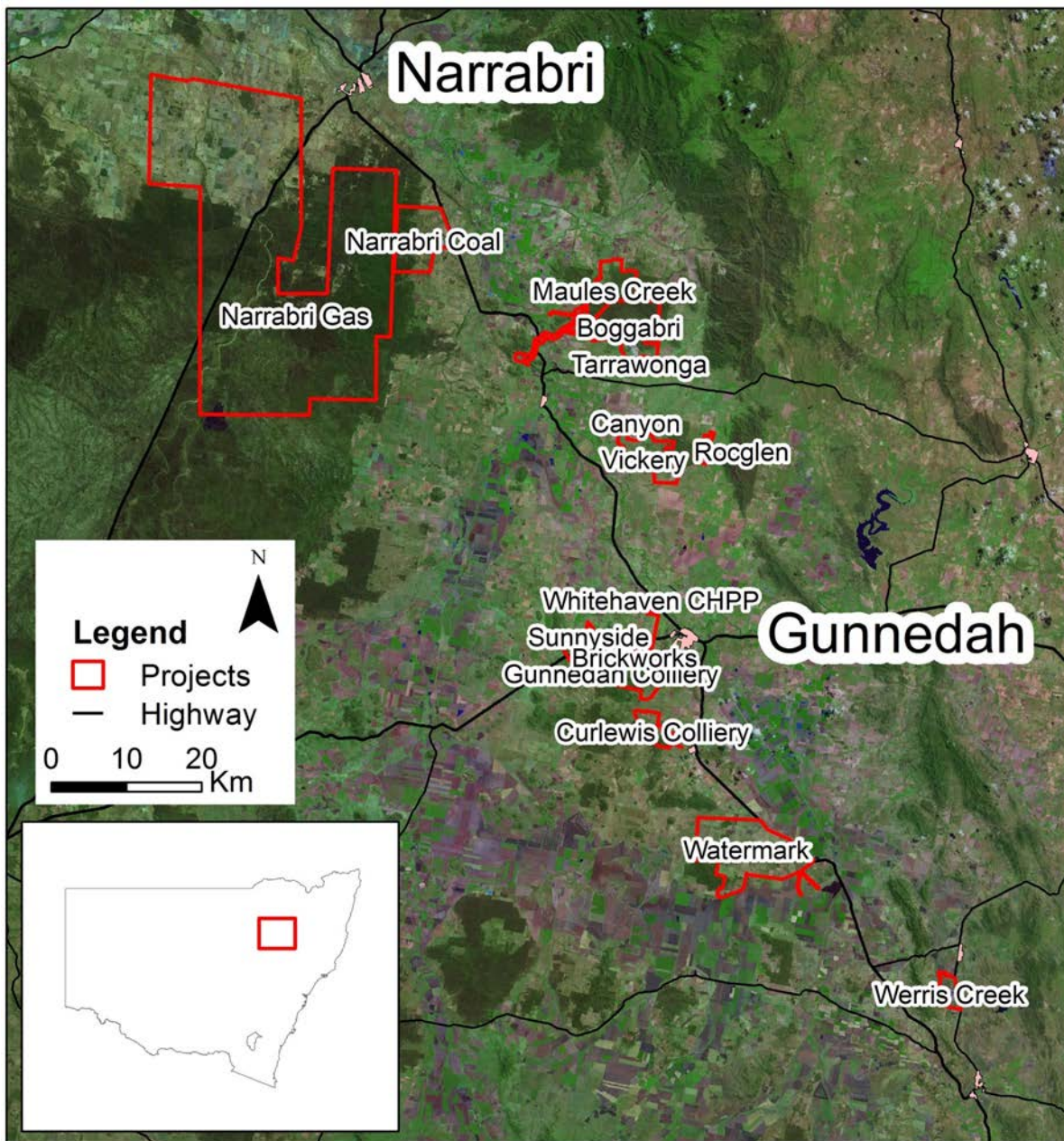


Figure 1. Projects in the North West Region of NSW

For more dust, noise, blast, water and rehabilitation data from each project, see the following reports:

- Leard Forest Mining Precinct
- Pilliga East Forest Mining Precinct
- Vickery Forest Mining Precinct
- Gunnedah Mining Precinct
- Werris Creek Mining Precinct.

To view the reports visit www.industry.nsw.gov.au and search for 'Land and Water Commissioner'.

Table 1. Projects in the North West Region of NSW

Project	Type	Status	Rehabilitation security held
Maules Creek	Open-cut	Operating	\$79,142,000
Boggabri	Open-cut	Operating	\$39,540,000
Tarrowonga	Open-cut	Operating	\$21,150,000
Narrabri Coal	Underground	Operating	\$10,338,000
Narrabri Gas	Proposed CSG	Exploration	\$43,348,000
Roclglen	Open-cut	Operating	\$5,751,000
Vickery	Proposed open cut	Care & maintenance	\$200,000
Canyon	Open-cut	Care & maintenance	\$605,000
Whitehaven CHPP	Processing	Operating	N/A
Sunnyside	Open-cut	Care & maintenance	\$7,810,000
Brickworks	Open-cut	Care & maintenance	\$500,000
Gunnedah Colliery	Underground	Care & maintenance	\$2,938,000
Curlewis Colliery	Underground	Care & maintenance	\$131,000
Watermark	Proposed open-cut	Exploration	\$250,000
Werris Creek	Open-cut	Operating	\$14,294,000

More information

For more information on licensing, project approvals and NSW Government data, see the following:

NSW Department of Planning and Environment (DPE) www.planning.nsw.gov.au

Division of Resources and Geoscience (DRG) www.resourcesandenergy.nsw.gov.au

NSW Environment Protection Authority (EPA) www.epa.nsw.gov.au

NSW Department of Primary Industries—Water www.dpi.nsw.gov.au

Dust

- PM10 is dust in the air that is 10 micrometres or less in diameter.
- PM10 dust can be monitored using a high-volume air sampler (HVAS) or tapered element oscillating microbalance (TEOM).
- Monitoring results represent dust generation from all activities in the region including mining, agriculture, utilisation of unsealed roads and regional events such as dust storms and bushfires.
- There are 28 company-owned air monitors (i.e. HVAS or TEOM) measuring PM10 dust levels in the Gunnedah Region.
- The nearest NSW Government-operated dust monitor is located at Tamworth. There are no coal mines or coal seam gas projects near Tamworth.

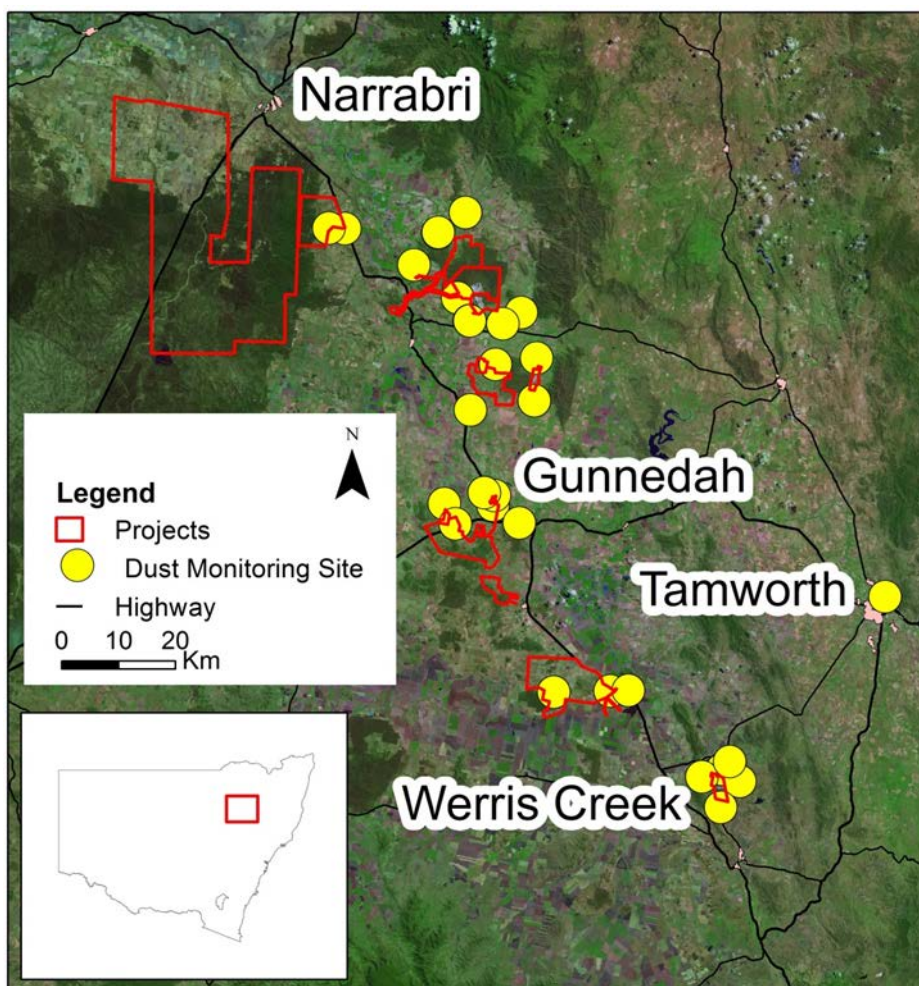


Figure 2. Dust monitoring sites in the North West Region

Long-term dust trends

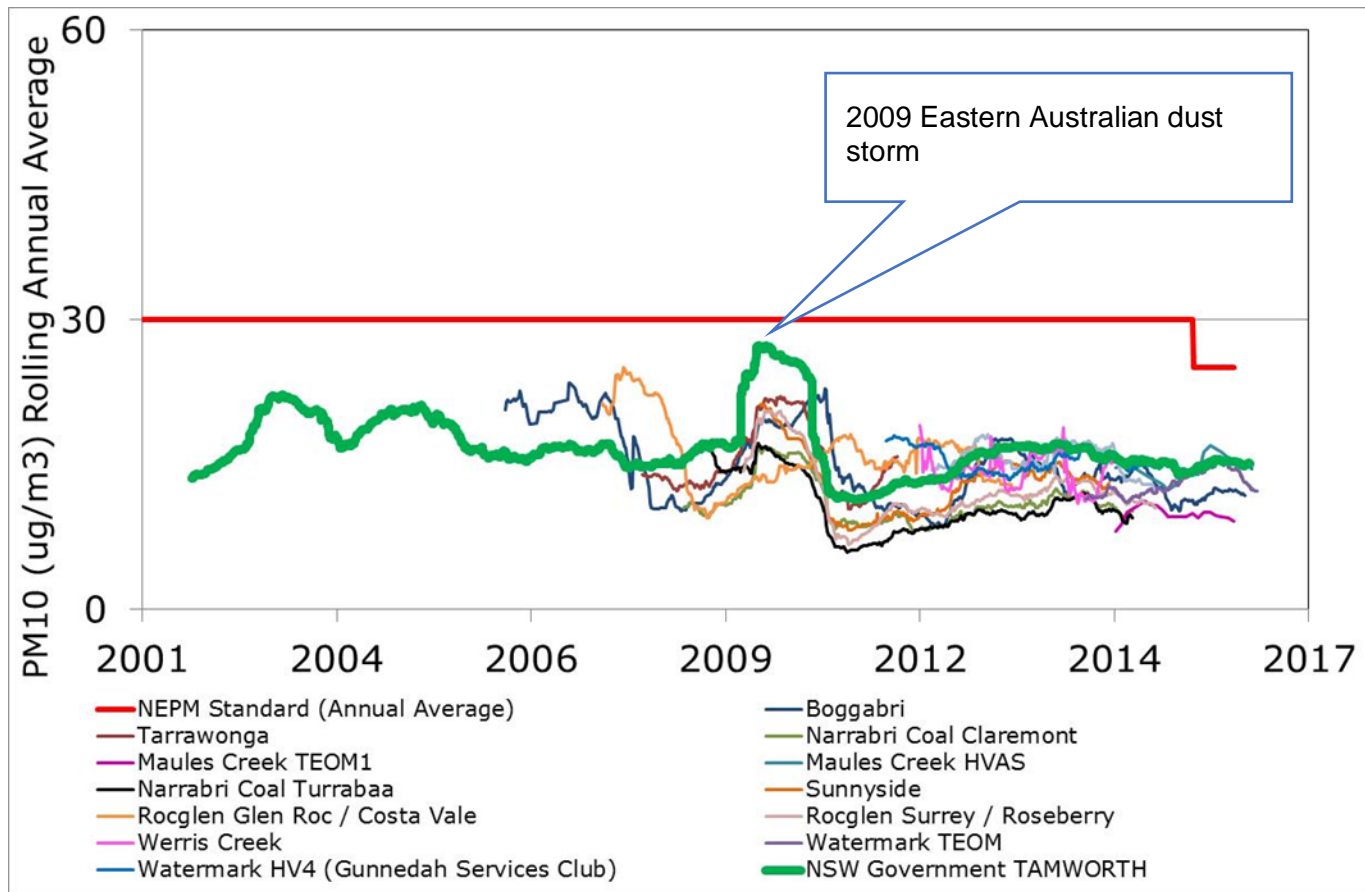


Figure 3. Rolling annual average dust trends in the North West Region, 2001 to 2017

Note: The rolling annual average is used to understand long-term dust trends.

Australian air quality standards are detailed in the [National Environment Protection \(Ambient Air Quality\) Measure](#) (NEPM). The NEPM requires the NSW Government to monitor air quality and this helps to identify potential air quality problems.

© State of New South Wales through Department of Industry 2017. This publication is copyright. You may download, display, print and reproduce this material provided that the wording is reproduced exactly, the source is acknowledged, and the copyright, update address and disclaimer notice are retained. To copy, adapt, publish, distribute or commercialise any of this publication you will need to seek permission from the Department of Industry.

Disclaimer: The information contained in this publication is based on knowledge and understanding at the time of writing, November 2017. However, because of advances in knowledge, users are reminded of the need to ensure that the information upon which they rely is up to date and to check the currency of the information with the appropriate officer of the Department of Industry or the user's independent advisor.