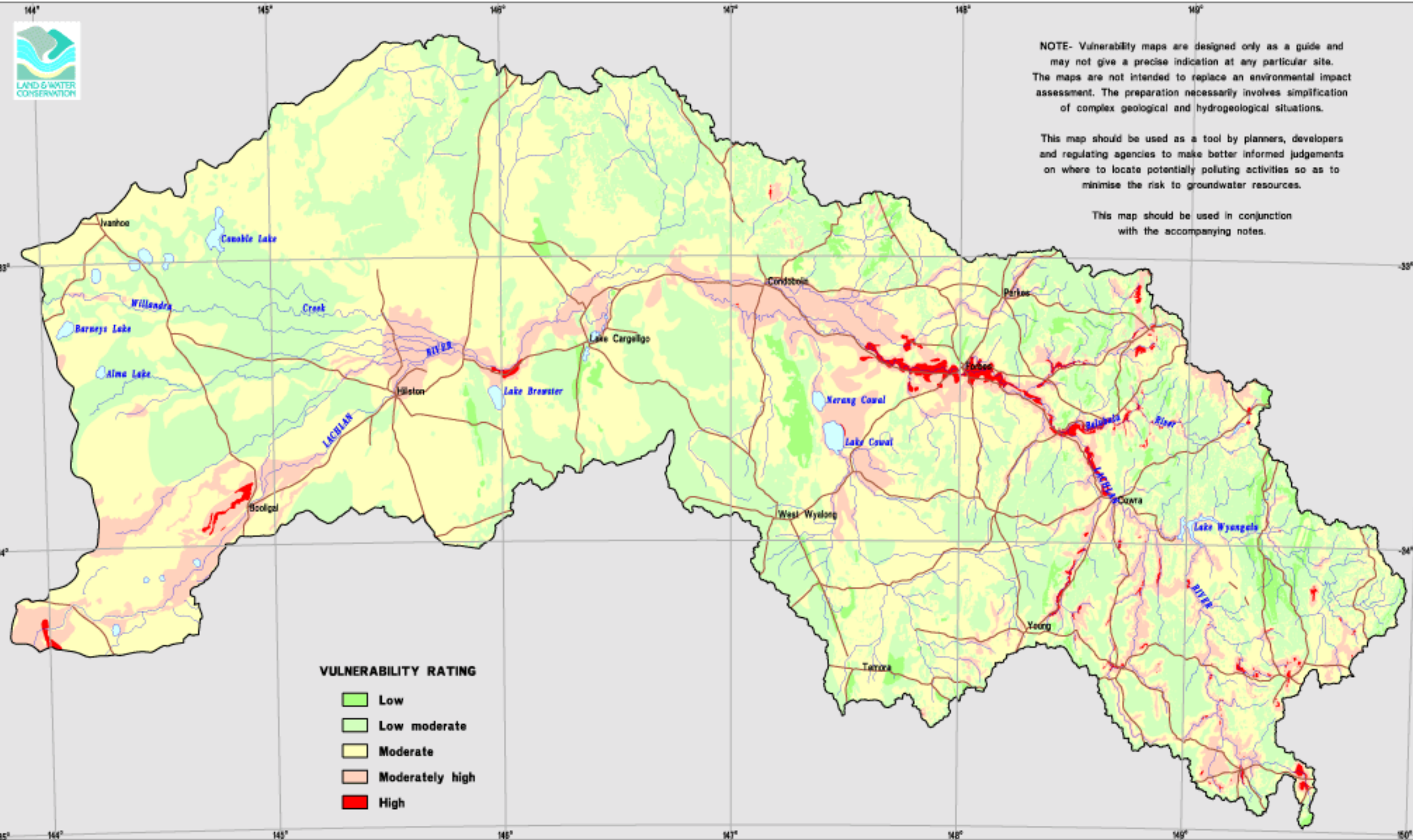




NOTE- Vulnerability maps are designed only as a guide and may not give a precise indication at any particular site. The maps are not intended to replace an environmental impact assessment. The preparation necessarily involves simplification of complex geological and hydrogeological situations.

This map should be used as a tool by planners, developers and regulating agencies to make better informed judgements on where to locate potentially polluting activities so as to minimise the risk to groundwater resources.

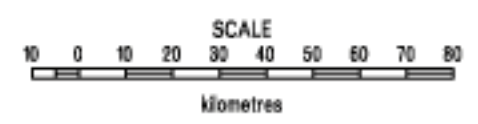
This map should be used in conjunction with the accompanying notes.



VULNERABILITY RATING

Low
Low moderate
Moderate
Moderately high
High

GROUNDWATER VULNERABILITY
LACHLAN CATCHMENT



Lamberts Conformal Conic Projection.
Standard Parallels -32°00' and -35°00', Central Meridian 147°00'.



This map forms part of the New South Wales Groundwater Vulnerability Map Series.
Map compilation 2001; DLWC, Centre for Natural Resources; G.Piscopo, J.Dwyer; in consultation with DLWC Central West Region.

Further information can be obtained from
Department of Land and Water Conservation,
Central West Region,
209 Cobra Street, Dubbo, NSW.