

151°15'0"E 151°20'0"E 151°25'0"E 151°30'0"E 151°35'0"E 151°40'0"E

32°50'0"S 32°55'0"S 33°0'0"S 33°5'0"S 33°10'0"S 33°15'0"S 33°20'0"S 33°25'0"S

32°50'0"S 32°55'0"S 33°0'0"S 33°5'0"S 33°10'0"S 33°15'0"S 33°20'0"S 33°25'0"S



# MACQUARIE-TUGGERAH LAKES BASIN

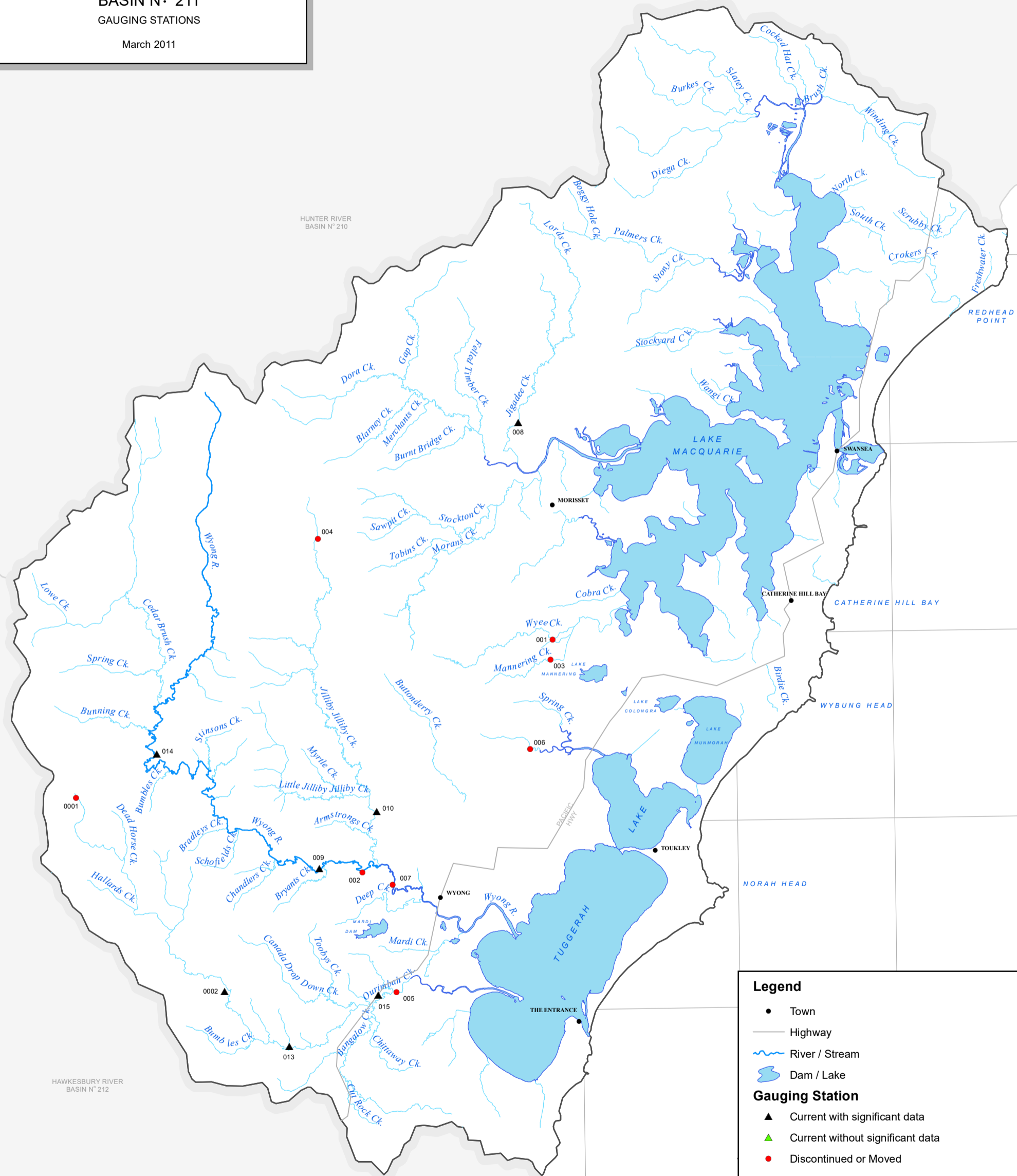
## BASIN N<sup>o</sup> 211

### GAUGING STATIONS

March 2011

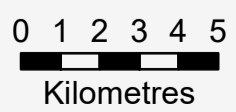
HUNTER RIVER  
BASIN N<sup>o</sup> 210

HAWKESBURY RIVER  
BASIN N<sup>o</sup> 212



### Legend

- Town
  - Highway
  - ~ River / Stream
  - Dam / Lake
- Gauging Station**
- ▲ Current with significant data
  - ▲ Current without significant data
  - Discontinued or Moved



CARTOGRAPHY BY: J.C. PETROVIC March 2011

151°15'0"E 151°20'0"E 151°25'0"E 151°30'0"E 151°35'0"E 151°40'0"E

211 MACQUARIE-TUGGERAH LAKES BASIN

211 MACQUARIE-TUGGERAH LAKES BASIN

Site ID	Sitename	Cat	Latitude	Longitude
211001	Wye Creek at Wye	C	-33° 10' 07"	151° 29' 13"
211002	Wyong River at Wyong	C	-33° 16' 16"	151° 23' 03"
211003	Mannering Creek at Wye	C	-33° 10' 40"	151° 29' 08"
211004	Jiliby Creek at Olney	C	-33° 07' 20"	151° 21' 48"
211005	Ourimbah Creek at Tuggerah	C	-33° 19' 29"	151° 24' 05"
211006	Wallarah Creek at Warnervale	C	-33° 13' 02"	151° 28' 27"
211007	Wyong River U/S Wyong Weir	C	-33° 16' 37"	151° 24' 00"
211008	Jigadee Creek at Avondale	A	-33° 04' 19"	151° 28' 13"
211009	Wyong River at Gracemere	A	-33° 16' 09"	151° 21' 41"
211010	Jiliby Creek at U/S Wyong River (Durren Lane)	A	-33° 14' 39"	151° 23' 32"
211013	Ourimbah Creek at U/S Weir	A	-33° 20' 53"	151° 20' 38"
211014	Wyong River at Yarramalong	A	-33° 13' 01"	151° 16' 34"
211015	Ourimbah Creek D/S Bangalow Creek	A	-33° 19' 33"	151° 23' 29"
2110001	Springs Rd Water Level- Ground Water Investigations	C	-33° 14' 09"	151° 13' 59"
2110002	Middle Ourimbah	A	-33° 19' 23"	151° 18' 36"