

BASIN PLAN 2012

# NSW Murray-Darling Basin Porous Rock Water Resource Plan Consultation Report

**Schedule C**

Published by Department of Planning, Industry and Environment

**NSW Murray-Darling Basin Porous Rock Alluvium Water Resource Plan Consultation Report**

First published July 2019.

NOTE: On 1 July 2019, NSW Department of Industry became part of NSW Department of Planning, Industry and Environment. Any references to Department of Industry in this document, except where made in a historical context, can be taken to refer to Department of Planning, Industry and Environment.

**More information**

NSW Department of Planning, Industry and Environment

[www.industry.nsw.gov.au/water](http://www.industry.nsw.gov.au/water)

**Acknowledgments**

NSW Office of Environment and Heritage

INT17/2229837

---

© State of New South Wales through Department of Planning, Industry and Environment 2019. You may copy, distribute, display, download and otherwise freely deal with this publication for any purpose, provided that you attribute the Department of Planning, Industry and Environment as the owner. However, you must obtain permission if you wish to charge others for access to the publication (other than at cost); include the publication in advertising or a product for sale; modify the publication; or republish the publication on a website. You may freely link to the publication on a departmental website.

Disclaimer: The information contained in this publication is based on knowledge and understanding at the time of writing (July 2019) and may not be accurate, current or complete. The State of New South Wales (including the Department of Planning, Industry and Environment), the author and the publisher take no responsibility, and will accept no liability, for the accuracy, currency, reliability or correctness of any information included in the document (including material provided by third parties). Readers should make their own inquiries and rely on their own advice when making decisions related to material contained in this publication.

# Acknowledgement of Traditional Owners

**The New South Wales Government proudly acknowledges the Aboriginal community of NSW and their rich and diverse culture and pay respect to their Elders past, present and future.**

The NSW acknowledges Aboriginal people as Australia's First Peoples and the Traditional Owners and Custodians of the lands and waters, practicing the oldest living culture on earth.

We acknowledge that the people of the Barapa Barapa, Barkandji, Gomeroi/ Kamilaroi, Maraura, Muthi Muthi, Nari Nari, Ngarabal, Ngiyampa, Nyeri Nyeri, Tati Tati, Wadi Wadi, Wemba Wemba, Weki Weki, Wiradjuri and Yorta Yorta Nations hold significant connection to the lands which rest upon the NSW Murray-Darling Basin Porous Rock.

The NSW Murray-Darling Basin Porous Rock WRPA holds areas of great spiritual, cultural and economic importance to the first nation people and NSW recognises the connection of the water to the people of these nations to the water.

We recognise the intrinsic connection of Traditional Owners to country and acknowledge their contribution to the management of the NSW Murray-Darling Basin Porous Rock WRP area's landscapes and natural resources.

The Department of Planning, Industry and Environment understands the need for consultation and inclusion of Traditional Owner knowledge, values and uses in water quality planning to ensure we are working towards equality in objectives and outcomes.

The Department of Planning, Industry and Environment is committed to continue future relationships and building strong partnerships with our First Nation People.

We thank the Elders, representatives of these Nations and the Aboriginal community who provided their knowledge throughout the planning process.

# Contents

Acknowledgement of Traditional Owners.....	i
1 Introduction .....	1
1.1 The role of the consultation report.....	1
1.2 The Basin Plan 2012 (Water Act 2007- Commonwealth) .....	1
1.3 NSW Murray-Darling Basin Porous Rock WRP Area .....	2
2 Consultation.....	4
2.1 Broad public consultation.....	4
2.1.1 Status and issues phase .....	4
2.1.2 Public exhibition phase .....	4
2.2 Targeted consultation .....	4
2.2.1 NSW Groundwater SAP .....	5
2.2.3 Workshops for all stakeholder advisory panels.....	6
2.3 First Nation consultation .....	7
2.3.1 Face to Face interviews.....	7
2.3.2 Workshops.....	7
2.3.3 Consultation outcomes .....	8
Attachment A – Barapa Barapa First Nations Consultation .....	11
Attachment B – Barkandji First Nations Consultation.....	12
Attachment C – Gomeroi First Nations Consultation.....	13
Attachment D – Maraura First Nations Consultation .....	14
Attachment E – Muthi Muthi First Nations Consultation .....	15
Attachment F – Nari Nari First Nations Consultation.....	16
Attachment G – Ngarabal First Nations Consultation.....	17
Attachment H – Ngyiampaa First Nations Consultation .....	18
Attachment I – Nyeri Nyeri First Nations Consultation .....	19
Attachment J – Tati Tati First Nations Consultation .....	20
Attachment K – Wadi Wadi First Nations Consultation .....	21
Attachment L – Wemba Wemba First Nations Consultation .....	22
Attachment M – Weki Weki First Nations Consultation .....	23
Attachment N – Wiradjuri First Nations Consultation .....	24
Attachment O – Yorta Yorta First Nations Consultation .....	25

## Figures

Figure 1. GW6 NSW Murray-Darling Basin Porous Rock Water Resource Plan Area .....3

## Tables

Table 1: Groundwater WRP SAP Meetings .....5

DRAFT

# 1 Introduction

## 1.1 The role of the consultation report

Consultation with stakeholders and the community is at the forefront of the development of New South Wales (NSW) Water Resource Plans (WRPs). Consultation has been undertaken for each of the 20 surface water and groundwater WRPs being developed by NSW. The purpose of this report is to describe the consultation that was undertaken as part of the development of the WRPs. Specifically, this report will detail the public consultation, both broad and targeted that took place within the NSW Murray-Darling Basin Porous Rock WRP area in order to further the development of the NSW Murray-Darling Basin Porous Rock WRP and inform changes to the NSW Murray-Darling Basin Porous Rock Water Sharing Plans (WSPs).

## 1.2 The Basin Plan 2012 (Water Act 2007- Commonwealth)

The Basin Plan provides a coordinated approach to managing Basin water resources across Queensland, NSW, ACT, Victoria and South Australia. In NSW the plan came into effect following the signing of Inter-governmental and National Partnership Agreements in 2014. As lead agency, Department of Planning, Industry and Environment is working together with agencies including Office of Environment and Heritage (OEH) to implement the plan. It requires NSW to develop WRPs for each area within the Murray-Darling Basin. The development of each WRP is guided by the requirements set out in Chapter 10 of the Basin Plan. Consultation and the views of local communities are an integral part of the preparation and development of WRPs and the following requirements of the Basin Plan are assessed in relation to consultation.

### 10.07 Consultation to be demonstrated

(1) A water resource plan prepared by a Basin State must contain a description of the consultation in relation to the plan (including in relation to any part of the plan), if any, that was undertaken before the State gave the plan to the Authority under subsection 63(1) of the Act.

### 10.26 Planning for environmental watering

(1) A water resource plan must provide for environmental watering to occur...  
 (2) For the purposes of subsection (1), the water resource plan must be prepared having regard to:  
 (b) the views of local communities, including bodies established by a Basin State that express community views in relation to environmental watering.

### 10.53 Consultation and preparation of water resource plan

(1) A water resource plan must be prepared having regard to the views of relevant Indigenous organisations with respect to the matters identified under section 10.52...

## 1.3 NSW Murray-Darling Basin Porous Rock WRP Area

The NSW Murray-Darling Basin Porous Rock Water Resource Plan covers groundwater within the porous rock formations of the Kanmantoo and Lachlan Fold Belts. These rocks overlie the NSW Murray-Darling Basin Fractured Rock and are largely overlain by other sediments. The WRP area includes four SDL resource units, the Western Porous Rock, Gunnedah-Oxley Basin, Sydney Basin MDB and Oaklands Basin. The boundaries of these SDL resource units reflect those of the corresponding groundwater sources managed under NSW water sharing plans and consist of 6 geographically separate areas:

1. The Western Porous Rock occurs in the south-western corner of the state extending west from the junction of the Murray and Murrumbidgee Rivers along the NSW-Victorian border, north along the NSW-SA border and then north-east to the junction of the Darling and Paroo Rivers.
2. An isolated area of Western Porous Rock (approximately 4000 km<sup>2</sup>), to the north east of Ivanhoe
3. The Oaklands Basin, a small area around Jerlinderie in the south of the state
4. The Gunnedah-Oxley Basin extending from Goondiwindi in the north to Dubbo in the south west and near Murrurundi in the south east.
5. A small area around Cassilis belonging to the Sydney Basin MDB.
6. Another small region of the Sydney Basin MDB extending from Rylstone approximately 50km to the north, east and south.

NSW MURRAY-DARLING BASIN POROUS ROCK WRP AREA

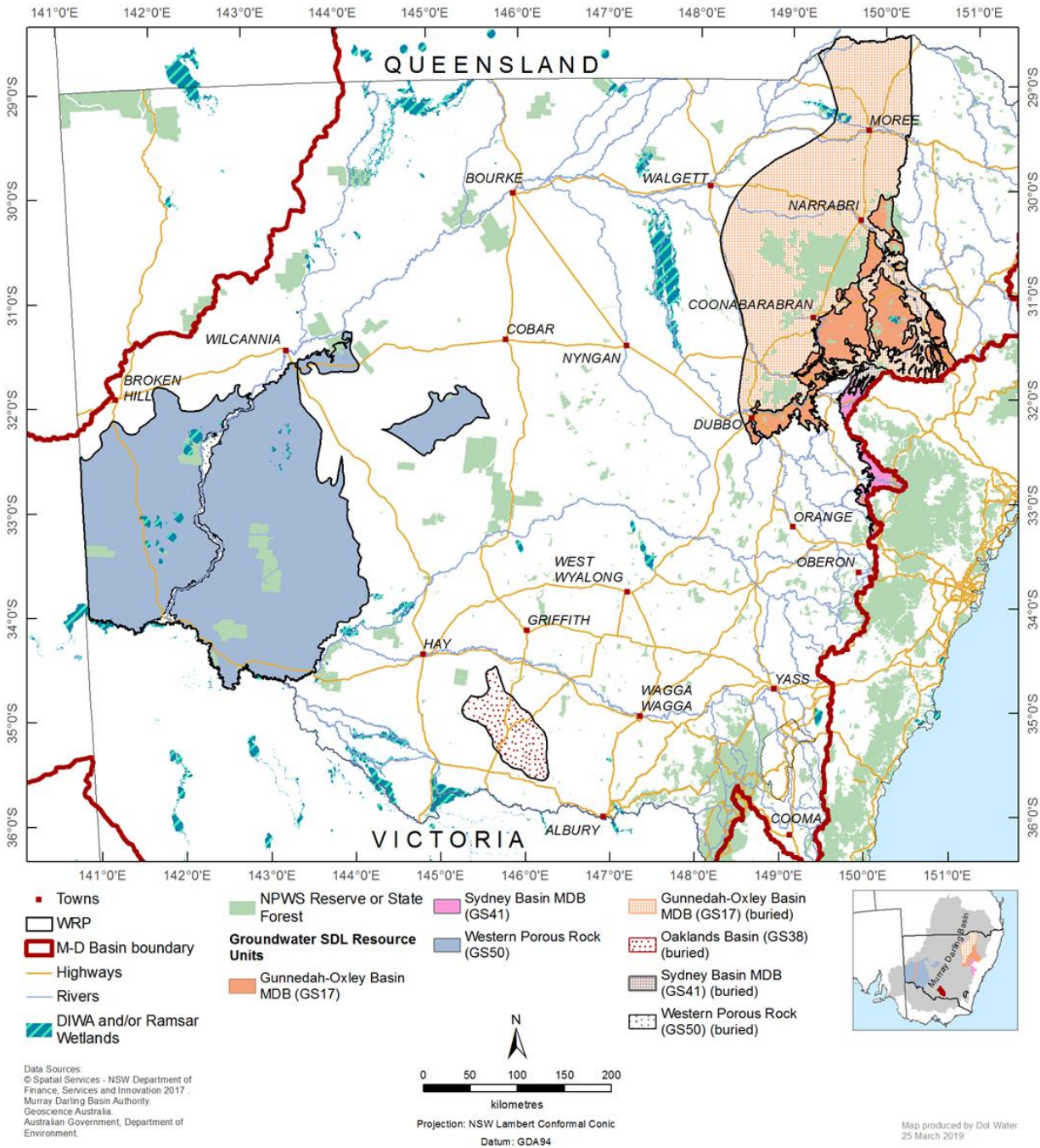


Figure 1. GW6 NSW Murray-Darling Basin Porous Rock Water Resource Plan Area



## 2 Consultation

### 2.1 Broad public consultation

Stakeholder consultation is an essential part of the development of NSW WRPs and was undertaken throughout the development of the NSW Murray-Darling Basin Porous Rock WRP. The general public and stakeholders had opportunity to provide comment during the early phase of WRP development through the Status and Issues phase (Section 2.1.1) and then again in the later stages of WRP development during the public exhibition phase (Section 2.1.2).

#### 2.1.1 Status and issues phase

The NSW Murray-Darling Basin Porous Rock WRP Status and Issues Paper (NSW Department of Industry) was released for public comment on August 2017. This can be viewed at [www.industry.nsw.gov.au/water/plans-programs/water-resource-plans/status](http://www.industry.nsw.gov.au/water/plans-programs/water-resource-plans/status)

Two public submissions on this paper were received and within these submissions 12 issues were raised. Issues raised in submissions were logged. An Issues Assessment Report was prepared by NSW Department of Industry for internal and inter-agency analysis, as well as for consideration of the Groundwater Stakeholder Advisory Panel.

#### 2.1.2 Public exhibition phase

The Water Sharing Plan for the NSW Murray-Darling Basin Porous Rock Groundwater Sources 2020 and draft NSW Murray-Darling Basin Porous Rock WRP were released for public comment on the 22<sup>nd</sup> July 2019. They can be viewed at (<https://www.industry.nsw.gov.au/water/plans-programs/water-resource-plans/drafts>).

During this phase Department of Planning, Industry and Environment will communicate with stakeholders in a number of ways.

- Stakeholder specific consultations
- Public information sessions (early evening sessions)
- Department of Planning, Industry and Environment website
- Submission email address
- Telephone number for inquiries
- Have Your Say website
- One-on-One consultations (where appropriate)
- Emails to stakeholders
- Local media – media releases
- Social media – tile advertising
- Local press advertising

Department of Planning, Industry and Environment will accept submissions on the draft WRP and amended WSP. Supporting documents have been made available to provide context and background information.

Public submissions received on the draft WRP and amended WSP will be prioritised and any new issues progressed for further consultation with the Groundwater SAP.

### 2.2 Targeted consultation

Targeted consultation has been undertaken for groundwater WRPs through a Groundwater Stakeholder Advisory Panel (SAP). The SAP consists of representatives of key stakeholders and government agencies.

Their role is to provide a forum where draft elements of the WRP could be reviewed, and the various interests and views put forward and discussed to promote common understanding. The SAP was the focal point for targeted consultation for this plan.

### 2.2.1 NSW Groundwater SAP

The Groundwater SAP, established in August 2017 takes its membership from the following stakeholder groups or interests:

- Department of Planning, Industry and Environment
- Office of Environment and Heritage (OEH)
- Murray Darling Basin Authority
- Seven regional representatives of the NSW Irrigators Council
- NSW Nature Conservation Council
- Murray Lower Darling Rivers Indigenous Nations (MLDRIN)
- Northern Basin Aboriginal Nations (NBAN)
- Inland Rivers Network
- NSW Minerals Council
- Local Government NSW

The SAP Terms of Reference can be viewed here (<https://www.water.nsw.gov.au/water-management/water-resource-plans/Groundwater-SAP-terms-of-reference.pdf>). Broadly, they are an advisory panel that have been charged with helping to identify issues, examine options, and provide Department of Planning, Industry and Environment with feedback and advice throughout the development of WRPs.

The number of SAP meetings held as part of the Groundwater WRP development and the issues that were discussed at these meetings can be seen in Table 1.

**Table 1: Groundwater WRP SAP Meetings**

SAP Meeting (Number & Description)	Location	Date
<p><b>SAP Meeting 1: -</b></p> <ul style="list-style-type: none"> <li>• Introduction to the SAP and the Terms of Reference</li> <li>• WRP Process – Road Map</li> <li>• Status and Issues</li> <li>• Resource Descriptions</li> <li>• WRP Evaluation Report</li> <li>• Risk Assessment</li> <li>• The Way Forward</li> </ul>	Sydney, NSW	08 September 2017
<p><b>SAP Meeting 2: -</b></p> <ul style="list-style-type: none"> <li>• Resource Descriptions and Risk Assessment - update</li> <li>• Sustainable Diversions Limits and Long Term Average Annual Extraction Limits</li> <li>• Entitlements</li> <li>• Groundwater Dependent Ecosystems</li> <li>• Issues assessments</li> <li>• Consultation strategy</li> </ul>	Sydney, NSW	31 October 2017

SAP Meeting (Number & Description)	Location	Date
<p><b>SAP Meeting 3:-</b></p> <ul style="list-style-type: none"> <li>• Water Renewal Task Force</li> <li>• Modelling</li> <li>• IR Guideline</li> <li>• Indigenous Consultation</li> <li>• Compliance with LTAAEL</li> <li>• Permitted Take (MDBA) <ul style="list-style-type: none"> <li>SDL Compliance</li> <li>Groundwater Amendments Disallowance</li> </ul> </li> <li>• Permitted Take</li> <li>• Issues Assessment Report</li> <li>• Risk Assessment Feedback Report</li> </ul>	Sydney, NSW	14 March 2018
<p><b>SAP Meeting 4:-</b></p> <ul style="list-style-type: none"> <li>• GW WRP development...The road ahead</li> <li>• SDL/LTAAEL Amended Policy Proposal</li> <li>• Annual Permitted Take/SDL Compliance</li> <li>• Recharge/Specification Environmental Water</li> <li>• GDE Policy Proposal</li> <li>• WSP Policy Proposals; <ol style="list-style-type: none"> <li>1. Local Impacts Management,</li> <li>2. Distance Rules,</li> <li>3. Account Management Rules,</li> <li>4. Trade,</li> <li>5. Contamination Sources</li> <li>6. Connectivity</li> </ol> </li> <li>• WSP/Split Merge Process</li> </ul>	Sydney, NSW	17 May 2018
<p><b>SAP Meeting 5:</b></p> <ul style="list-style-type: none"> <li>• Lachlan Alluvium Water Resource Plan</li> <li>• Lachlan Alluvium Water Sharing Plan</li> <li>• Lachlan Alluvium Water Quality Management Plan</li> <li>• NSW Groundwater Environmental Monitoring, Evaluation and Reporting Plan</li> <li>• Account management Rules, Carryover and Available Water Determinations</li> <li>• Aboriginal Engagement / Cultural Water for the Ngemba Billabong</li> </ul>	Sydney, NSW	15 <sup>th</sup> August 2018
<p><b>SAP Meeting 6:-</b></p> <ul style="list-style-type: none"> <li>• Final Lachlan Alluvium Water Resource Plan (WRP) – summary of changes (public exhibition and MDBA assessment feedback)</li> <li>• Progress on the Macquarie-Castlereagh, Murrumbidgee and Gwydir Alluvium WRP - summary of changes (public exhibition)</li> <li>• Update on progress on the remaining draft Groundwater Water Resource Plans</li> </ul>	Sydney, NSW	25 January 2019

### 2.2.3 Workshops for all stakeholder advisory panels

The department convened two All SAP workshops during the course of WRP development. Both workshops were held in Sydney, the first on 11 – 12 December 2017 and the second on 5 – 6 June 2018. Attendees included representatives from all WRP SAP committees and key NSW government agencies including the MDBA and CEWO. The first All SAP workshop covered three main topics:

1. NSW Government's response to recent reviews and how the Department of Planning, Industry and Environment will approach its responsibilities within the Murray-Darling Basin
2. Key NSW policy issues requiring resolution in order to progress WRP development
3. How SAPs and agencies can work together to deliver the water resource plans over the next 12–18 months.

The second All SAP workshop covered seven main topics:

1. State-wide planning assumptions
2. The WRP including the LTWP, Risk Assessment and Water Quality Management Plan
3. MDBA compliance framework
4. Water Renewal Taskforce update
5. First Nation engagement and cultural water
6. Northern Basin Floodplain Harvesting and Northern watering event and Southern Basin SDL Adjustment Mechanism and Pre-requisite Policy Measures
7. Groundwater policy update

## 2.3 First Nation consultation

The NSW Murray-Darling Basin Porous Rock WRP area is located within the traditional lands of, and is significant to, the Barapa Barapa, Barkandji, Gomeroi/ Kamilaroi, Maraura, Muthi Muthi, Nari Nari, Ngarabal, Ngiyampa, Nyeri Nyeri, Tati Tati, Wadi Wadi, Wemba Wemba, Weki Weki, Wiradjuri and Yorta Yorta Nations and traditional owners. The department has spent time engaging and consulting traditional owners of these people to identify and record objectives and outcomes in regard to Aboriginal spiritual and cultural values and uses within the NSW Murray-Darling Basin Porous Rock WRP area.

Consultation with traditional owners was undertaken using a nation-based model. The department facilitated the gathering of cultural information from traditional owners. The reports including the development of cultural objectives, values and uses is attached in Attachments A to O.

### 2.3.1 Face to Face interviews

A series of face-to-face interviews are being undertaken with Senior Traditional Owners (TOs) from the respective Nations. Senior TOs who participate in the face-to-face interviews are drawn from three separate categories – grassroots, Native Title applicants and suggestions from other interview participants. These interviews will assist in formulating the discussion undertaken in workshops with the Nations.

**Gomeroi Nation** – In total eight Senior Traditional Owners were interviewed. They represented eight different family groups, over 12 320 different people and spoke for a broad range of communities.

**Nari Nari Nation** - In total three Senior Traditional Owners were interviewed. They represented two different family groups.

**Wadi Wadi** – In total nine Senior Traditional Owners were interviewed. They represented seven different family groups, over 5000 different people and spoke for a broad range of communities.

### 2.3.2 Workshops

Following on from the face-to-face interviews First Nation consultation workshops are undertaken. To date workshops have been held and finalised and in the following Nations:

**Gomeroi Nation** – Four workshops were held in Tamworth, Walgett, Moree and Tingha in April 2018. A total of 31 participants, including 30 Gomeroi Traditional Owners, attended.

**Nari Nari Nation** - One workshop was held in Hay in November 2018. A total of 8 participants attended.

**Ngiyampaa Nation** – Three workshops were held in Lake Cargellico, Ivanhoe and Cobar in July 2018. A total of 17 participants, including 5 Traditional Owners attended the workshops

**Wadi Wadi Nation** -Workshops were held in Swan Hill in October 2018. There were 28 participants who signed the attendance sheet.

### 2.3.3 Consultation outcomes

The reports on the outcomes of the consultations with the Nations are included (as available) at Attachments A-O of this Consultation Report.

While the reports has been made available, the text for accreditation currently within the WRP is a 'placeholder' and reflects the generic Aboriginal objectives gleaned from discussions with Aboriginal people and groups to date. This will be updated ahead of the completion of the WRP based on Attachments A-O.

This report aims to demonstrate that:

- The WRP was developed in a way that had genuine regard to objectives and outcomes in respect of social, spiritual and cultural values and uses of the water resources by Traditional Owners.
- Consultation with relevant Indigenous organisations was undertaken.

In addition to consulting with Traditional Owners, NSW consulted with several organisations (e.g. native title, LALCS) Murdi Paaki working group, MLDRIN and NBAN. This demonstrates that:

- The consultation had regard to the views of relevant Indigenous organisations with respect to inclusion of Indigenous representation in the preparation and implementation of the plan.
- The consultation had regard to the views of relevant Indigenous organisations with respect to Indigenous social, cultural, spiritual and customary objectives, and strategies for achieving these objectives.
- The consultation had regard to the views of relevant Indigenous organisations with respect to encouragement of active and informed participation of Indigenous people.
- The consultation had regard to the views of relevant Indigenous organisations with respect to risks to Indigenous values and Indigenous uses arising from the use and management of the water resources of the water resource plan area.
- The consultation has regard to the views of Indigenous people with respect to cultural associations with the groundwater resources of this WRPA.

The consultation with the First Nations included the outcomes listed in Table 2.

Table 2. First Nations consultation outcomes.

Section	Requirement	Outcome
10.52(1)	WRP identifies objectives and outcomes toward the management of the water resource desirable to Indigenous people.	<p>Consultation completed in conjunction with Murray Lower Darling Rivers Indigenous Nations (MLDRIN) and Northern Basin Aboriginal Nations (NBAN)..</p> <p>Consultation completed in conjunction with MLDRIN and NBAN.</p>
10.52(2)	WRP developed with genuine regard to objectives and outcomes in respect of social, spiritual and cultural values and uses by Indigenous people.	An overview of the objectives and values are in Section 1.3.1, of the NSW Murray-Darling Basin Porous Rock WRP.
10.53(1)	That consultation with relevant Indigenous organisations was undertaken, including with the Murray Lower Darling Rivers Indigenous Nations.	MLDRIN assisted as nation organisers and had an important role in the consultation process.
10.53(1)(a)	WRP prepared having regard to the views of relevant Indigenous organisations with respect to native title rights, native title claims and Indigenous Land Use Agreements provided for by the Native Title Act 1993	<p>Discussions on native title rights, native title claims and Indigenous Land Use Agreements and the Native Title Act 1993 in relation to the water resources of the NSW Murray-Darling Basin Porous Rock WRP area.</p> <p>A letter was sent out to NTS Corp to advise on further consultations on country and how they would like to be engaged.</p>
10.53(1)(b)	WRP prepared having regard to the views of relevant Indigenous organisations towards registered Aboriginal heritage relating to the water resources of the WRPA	Local Aboriginal Lands Councils were invited; opportunities arose for them to speak of any listed sites on the heritage register throughout the workshop sessions.
10.53(1)(c)	WRP prepared having regard to the inclusion of Indigenous representation in the preparation and implementation of the plan	MLDRIN provided direct input via recommendations on the appropriate Traditional Owners to engage. This resulted in the relevant Traditional Owners for the NSW Murray-Darling Basin Porous Rock WRP area being represented. More details on Indigenous representation can be seen in the First Nations Consultation Reports, Attachments A to O of Schedule C.

Section	Requirement	Outcome
10.53(1)(d)	WRP prepared having regard to the views of relevant Indigenous organisations towards Indigenous social, cultural, spiritual and customary objectives and strategies for achieving these objectives	<p>Consultation included what people would want in the future.</p> <p>More detail on strategies can be seen in the First Nations Consultation Reports, Attachments A to O of Schedule C</p>
10.53(1)(e)	WRP prepared having regard to the views of relevant Indigenous organisations towards encouragement of active and informed participation of Indigenous people	<p>Relationships developed with Elders and a shared understanding of water management prior to conducting workshops with the broader group of First Nation Traditional Owners.</p> <p>More detail on the engagement process can be seen in the First Nations Consultation Reports, Attachments A to O of Schedule C</p>
10.53(1)(f)	WRP prepared having regard to the views of relevant Indigenous organisations towards risks to Indigenous values and Indigenous uses arising from the use and management of the water resources of the water resource plan area?	The risks to Indigenous Values and Uses are outline in First Nations Consultation Reports, Attachments A to O of Schedule C.
10.54	That the consultation has regard to the views of Indigenous people with respect to cultural flows?	<p>Additional consultation underway as part of the Basin Plan commitments package following the Basin Plan Amendment deal.</p> <p>Department of Planning, Industry and Environment is working with MDBA and MLDRIN and conversations will be continued</p>
10.55	WRP provides at least the same level of protection of Indigenous values and Indigenous uses as provided in a transitional or an interim water resource plan for the WRPA	Improved objectives ensure protection for Indigenous values and uses aligned with practical strategies and quantifiable performance indicators

# Attachment A – Barapa Barapa First Nations Consultation

This report outlines the process and findings of consultation undertaken with the Barapa Barapa Nation for the development of water resource plans (WRPs) in NSW, for accreditation by the Murray–Darling Basin Authority, under requirements of Chapter 10 of the Murray–Darling Basin Plan. It outlines the consultation process and methodology, making recommendations for future consultation with First Nations people. It presents findings on the objectives and outcomes of the Barapa Barapa people for the management of their water-dependent values and uses.

DRAFT



# Attachment B – Barkandji First Nations Consultation

This report outlines the process and findings of consultation undertaken with the Barkandji Nation for the development of water resource plans (WRPs) in NSW, for accreditation by the Murray–Darling Basin Authority, under requirements of Chapter 10 of the Murray–Darling Basin Plan. It outlines the consultation process and methodology, making recommendations for future consultation with First Nations people. It presents findings on the objectives and outcomes of the Barkandji people for the management of their water-dependent values and uses.

DRAFT

# Attachment C – Gomeroi First Nations Consultation

This report outlines the process and findings of consultation undertaken with the Gomeroi Nation for the development of water resource plans (WRPs) in NSW, for accreditation by the Murray–Darling Basin Authority, under requirements of Chapter 10 of the Murray–Darling Basin Plan. It outlines the consultation process and methodology, making recommendations for future consultation with First Nations people. It presents findings on the objectives and outcomes of the Gomeroi people for the management of their water-dependent values and uses.

DRAFT

# Attachment D – Maraura First Nations Consultation

This report outlines the process and findings of consultation undertaken with the Maraura Nation for the development of water resource plans (WRPs) in NSW, for accreditation by the Murray–Darling Basin Authority, under requirements of Chapter 10 of the Murray–Darling Basin Plan. It outlines the consultation process and methodology, making recommendations for future consultation with First Nations people. It presents findings on the objectives and outcomes of the Maraura people for the management of their water-dependent values and uses.

DRAFT

# Attachment E – Muthi Muthi First Nations Consultation

This report outlines the process and findings of consultation undertaken with the Muthi Muthi Nation for the development of water resource plans (WRPs) in NSW, for accreditation by the Murray–Darling Basin Authority, under requirements of Chapter 10 of the Murray–Darling Basin Plan. It outlines the consultation process and methodology, making recommendations for future consultation with First Nations people. It presents findings on the objectives and outcomes of the Muthi Muthi people for the management of their water-dependent values and uses.

DRAFT

# Attachment F – Nari Nari First Nations Consultation

This report outlines the process and findings of consultation undertaken with the Nari Nari Nation for the development of water resource plans (WRPs) in NSW, for accreditation by the Murray–Darling Basin Authority, under requirements of Chapter 10 of the Murray–Darling Basin Plan. It outlines the consultation process and methodology, making recommendations for future consultation with First Nations people. It presents findings on the objectives and outcomes of the Nari Nari people for the management of their water-dependent values and uses.

DRAFT

# Attachment G – Ngarabal First Nations Consultation

This report outlines the process and findings of consultation undertaken with the Ngarabal Nation for the development of water resource plans (WRPs) in NSW, for accreditation by the Murray–Darling Basin Authority, under requirements of Chapter 10 of the Murray–Darling Basin Plan. It outlines the consultation process and methodology, making recommendations for future consultation with First Nations people. It presents findings on the objectives and outcomes of the Ngarabal people for the management of their water-dependent values and uses.

DRAFT

# Attachment H – Ngyiampaa First Nations Consultation

This report outlines the process and findings of consultation undertaken with the Ngyiampaa Nation for the development of water resource plans (WRPs) in NSW, for accreditation by the Murray–Darling Basin Authority, under requirements of Chapter 10 of the Murray–Darling Basin Plan. It outlines the consultation process and methodology, making recommendations for future consultation with First Nations people. It presents findings on the objectives and outcomes of the Ngyiampaa people for the management of their water-dependent values and uses.

DRAFT

# Attachment I – Nyeri Nyeri First Nations Consultation

This report outlines the process and findings of consultation undertaken with the Nyeri Nyeri Nation for the development of water resource plans (WRPs) in NSW, for accreditation by the Murray–Darling Basin Authority, under requirements of Chapter 10 of the Murray–Darling Basin Plan. It outlines the consultation process and methodology, making recommendations for future consultation with First Nations people. It presents findings on the objectives and outcomes of the Nyeri Nyeri people for the management of their water-dependent values and uses.

DRAFT



# Attachment J – Tati Tati First Nations Consultation

This report outlines the process and findings of consultation undertaken with the Tati Tati Nation for the development of water resource plans (WRPs) in NSW, for accreditation by the Murray–Darling Basin Authority, under requirements of Chapter 10 of the Murray–Darling Basin Plan. It outlines the consultation process and methodology, making recommendations for future consultation with First Nations people. It presents findings on the objectives and outcomes of the Tati Tati people for the management of their water-dependent values and uses.

DRAFT

# Attachment K – Wadi Wadi First Nations Consultation

This report outlines the process and findings of consultation undertaken with the Wadi Wadi Nation for the development of water resource plans (WRPs) in NSW, for accreditation by the Murray–Darling Basin Authority, under requirements of Chapter 10 of the Murray–Darling Basin Plan. It outlines the consultation process and methodology, making recommendations for future consultation with First Nations people. It presents findings on the objectives and outcomes of the Wadi Wadi people for the management of their water-dependent values and uses.

DRAFT

# Attachment L – Wemba Wemba First Nations Consultation

This report outlines the process and findings of consultation undertaken with the Wemba Wemba Nation for the development of water resource plans (WRPs) in NSW, for accreditation by the Murray–Darling Basin Authority, under requirements of Chapter 10 of the Murray–Darling Basin Plan. It outlines the consultation process and methodology, making recommendations for future consultation with First Nations people. It presents findings on the objectives and outcomes of the Wemba Wemba people for the management of their water-dependent values and uses.

DRAFT

# Attachment M – Weki Weki First Nations Consultation

This report outlines the process and findings of consultation undertaken with the Weki Weki Nation for the development of water resource plans (WRPs) in NSW, for accreditation by the Murray–Darling Basin Authority, under requirements of Chapter 10 of the Murray–Darling Basin Plan. It outlines the consultation process and methodology, making recommendations for future consultation with First Nations people. It presents findings on the objectives and outcomes of the Weki Weki people for the management of their water-dependent values and uses.

DRAFT

# Attachment N – Wiradjuri First Nations Consultation

This report outlines the process and findings of consultation undertaken with the Wiradjuri Nation for the development of water resource plans (WRPs) in NSW, for accreditation by the Murray–Darling Basin Authority, under requirements of Chapter 10 of the Murray–Darling Basin Plan. It outlines the consultation process and methodology, making recommendations for future consultation with First Nations people. It presents findings on the objectives and outcomes of the Wiradjuri people for the management of their water-dependent values and uses.

DRAFT

# Attachment O – Yorta Yorta First Nations Consultation

This report outlines the process and findings of consultation undertaken with the Yorta Yorta Nation for the development of water resource plans (WRPs) in NSW, for accreditation by the Murray–Darling Basin Authority, under requirements of Chapter 10 of the Murray–Darling Basin Plan. It outlines the consultation process and methodology, making recommendations for future consultation with First Nations people. It presents findings on the objectives and outcomes of the Yorta Yorta people for the management of their water-dependent values and uses.

DRAFT